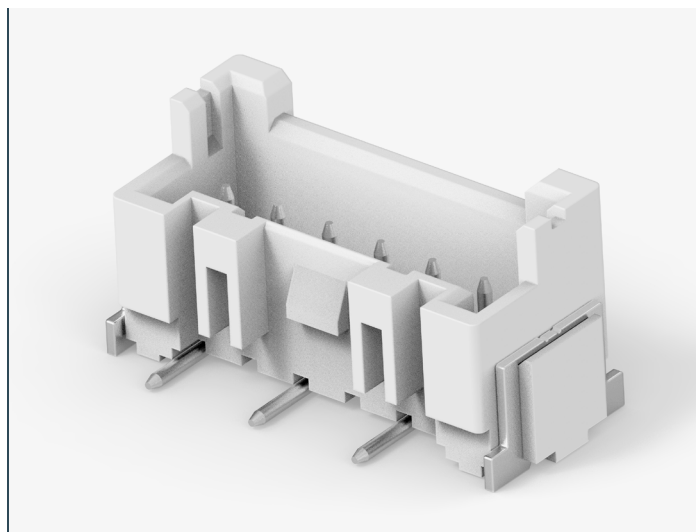


# INTRODUCING ECONOMY POWER 2.5 SURFACE MOUNT HEADERS

- Support automated PCB assembly
- Retro-fit with existing 2.5mm connectors
- Meets global safety standards



Economy Power 2.5 (EP 2.5) surface mount technology (SMT) headers are a solution for printed circuit board (PCB) manufacturers using automated assembly processes to build compact wire-to-board systems. These headers support more efficient PCB manufacturing processes, including automatic pick-and-place assembly and reflow soldering, and they provide design flexibility with retro-fit compatibility to existing 2.5mm pitch products.

## APPLICATIONS

- Major & small home appliances
- HVAC
- Industrial equipment
- Automation equipment
- Lighting
- Automotive

## LEARN MORE

- [Product Page](#)
- [Flyer](#)

## KEY BENEFITS

- Surface mount technology (SMT) supports automatic pick-and-place assembly and reflow soldering
- Reduced risk of connection failure due to solder bridging, as compared to through hole headers
- Mates with existing EP 2.5 connectors and similar 2.5mm pitch products
- Materials meet UL 94 V-0 and IEC 60335-1 glow wire test (GWT) flammability standards
- Connectors are UL and VDE certified