

ALCOSWITCH MINIATURE ROTARY SWITCH SERIES (MRSS)

TE Connectivity (TE)'s ALCOSWITCH Miniature Rotary Switch Series (MRSS) addresses manual programming applications. These high-quality rotary DIP switches are available in size 7.7mm square (horizontal) and 7.2mm square (vertical) for a wide range of possible applications like elevator and security system. Meanwhile the compact design offers 50% lower profile than standard DIP switches and save space around 40% PCB area. In addition, MRD Series provide more options for terminal, hexadecimal or binary code, with or without complement types to fulfill the variety requirements.

The MRSS Switches are characterized by contact rating of 0.4VA @ 20V DC or AC. Reference TE customer drawing for application instructions.

FEATURES

- Offer both SMD and THT
- Space saving with a low profile
- High reliability with 2 points contacts
- Hexadecimal or binary with 3 coding options
- Vertical and horizontal versions
- MSL 1 conformance
- Packaged in tube and tape/reel

APPLICATION

- Elevator
- Single chip
- Security system
- Lighting system
- Machinery
- Telecommunication

ALCOSWITCH MINIATURE ROTARY SWITCH SERIES (MRSS)

MRSS SERIES - TYPE CLASSIFICATION

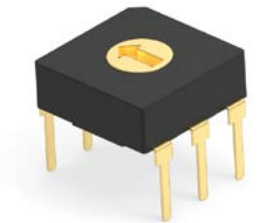
Rating		0.4VA @ 20V DC or AC MAX
Contact Resistance		100mΩ MAX @2VDC 10mA initial
Operation Temperature		-40°C to 85°C
Mechanical Life		10,000 steps
Electrical Life		10,000 steps @ 5VDC, 10mA
Withstanding Voltage		250VAC for 1 min
Operation Force		2.0mN-m MIN, 19.6mN m MAX
Soldering Conditions	Manual	Temp of iron tip: 320°C MAX. for 4±1 sec
	Flow	Preheat 100 to 105°C for:30±5 sec Solder temp 265°C ±3°C for 8±2 sec
	Reflow	Preheat 160 to 190°C for 90 to 120 sec Reflow temp 225°C (switch surface) for 20 to 60 sec Peak temp 255°C (switch surface) MAX

MATERIAL SPECIFICATIONS

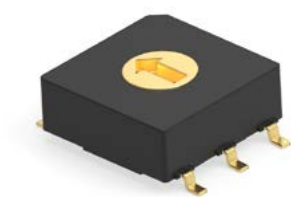
Components	Material	Finish	Components	Material	Finish
Case	PSS	Color: Black	Fixed contact	Cu alloy	Au flash
Frame	PSS	Color: Gray, Black, or Stainless Steel	Movable contact	Cu alloy	Au plated
Rotar	LCP	Color: White	Holder	SUS	Silver
Plate	SUS	-	-	-	-

TERMINAL

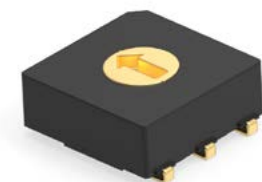
TH - VERTICAL, THROUGH HOLE TH (HEXADECIMAL)



SMGW - VERTICAL, GULLWING SM (HEXADECIMAL)



SMJ - VERTICAL, J-LEAD SM (BINARY)



SMGW - HORIZONTAL, GULLWING SM (BINARY)



ALCOSWITCH MINIATURE ROTARY SWITCH SERIES (MRSS)

MRSS-PN LIST

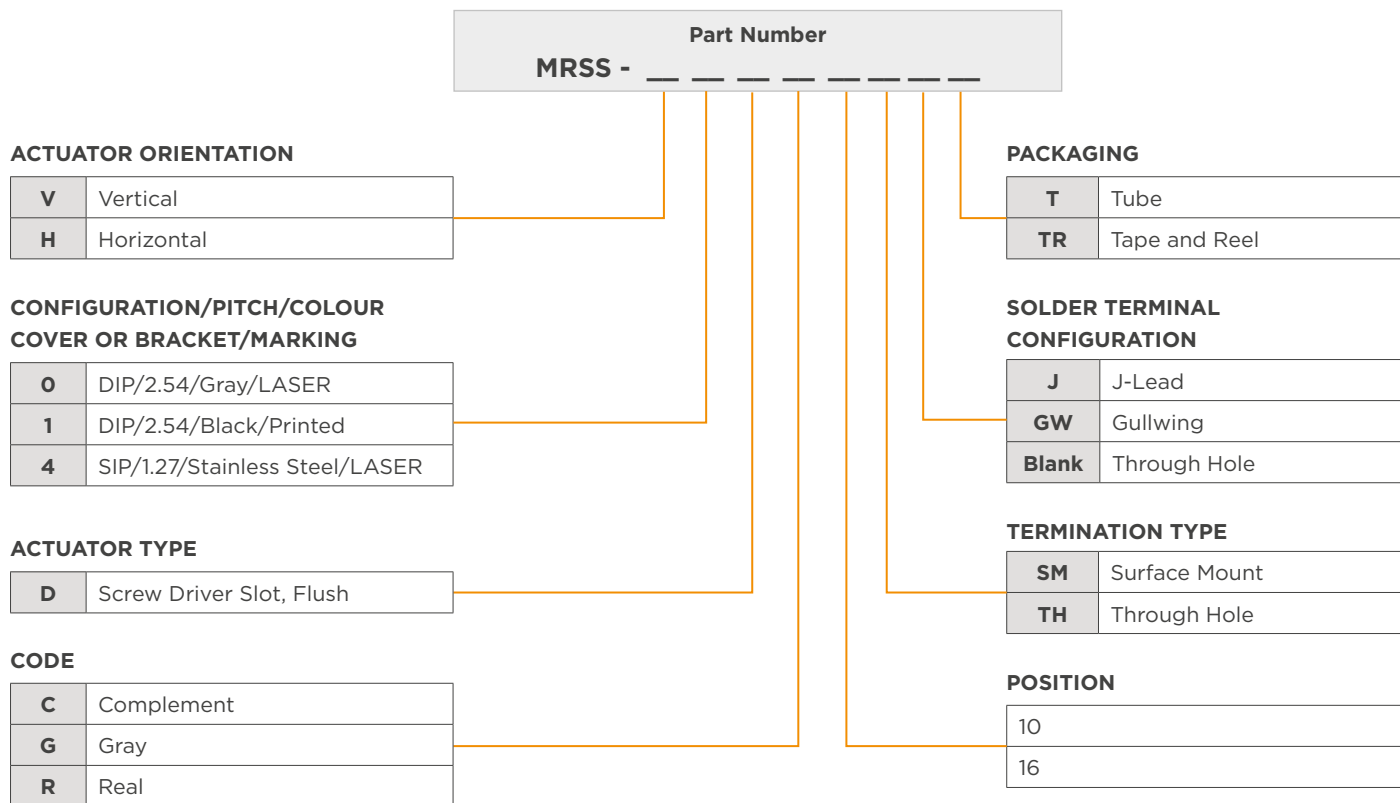
Base PN	Part Number	Smart Part Description	Orientation	Centerline	Color	Code	Position	Termination Type	Packaging
2396233	2396233-1	MRSSVODCI0SMJTR	Vertical	2.54 MM	Gray	C	10	Surface Mount	Tape & Reel
	2396233-2	MRSSVODCI0SMJT	Vertical	2.54 MM	Gray	C	10	Surface Mount	Tube
	2396233-3	MRSSVODCI0SMGWTR	Vertical	2.54 MM	Gray	C	10	Surface Mount	Tape & Reel
	2396233-4	MRSSVODCI0SMGWT	Vertical	2.54 MM	Gray	C	10	Surface Mount	Tube
	2396233-5	MRSSVODCI0THT	Vertical	2.54 MM	Gray	C	10	Through Hole	Tube
	2396233-6	MRSSVODCI6SMJTR	Vertical	2.54 MM	Gray	C	16	Surface Mount	Tape & Reel
	2396233-7	MRSSVODCI6SMJT	Vertical	2.54 MM	Gray	C	16	Surface Mount	Tube
	2396233-8	MRSSVODCI6SMGWTR	Vertical	2.54 MM	Gray	C	16	Surface Mount	Tape & Reel
	2396233-9	MRSSVODCI6SMGWT	Vertical	2.54 MM	Gray	C	16	Surface Mount	Tube
	1-2396233-0	MRSSVODCI6THT	Vertical	2.54 MM	Gray	C	16	Through Hole	Tube
	1-2396233-1	MRSSVODGI0SMJTR	Vertical	2.54 MM	Gray	G	10	Surface Mount	Tape & Reel
	1-2396233-2	MRSSVODGI0SMJT	Vertical	2.54 MM	Gray	G	10	Surface Mount	Tube
	1-2396233-3	MRSSVODGI0SMGWTR	Vertical	2.54 MM	Gray	G	10	Surface Mount	Tape & Reel
	1-2396233-4	MRSSVODGI0SMGWT	Vertical	2.54 MM	Gray	G	10	Surface Mount	Tube
	1-2396233-5	MRSSVODGI0THT	Vertical	2.54 MM	Gray	G	10	Through Hole	Tube
	1-2396233-6	MRSSVODGI6SMJTR	Vertical	2.54 MM	Gray	G	16	Surface Mount	Tape & Reel
	1-2396233-7	MRSSVODGI6SMJT	Vertical	2.54 MM	Gray	G	16	Surface Mount	Tube
	1-2396233-8	MRSSVODGI6SMGWTR	Vertical	2.54 MM	Gray	G	16	Surface Mount	Tape & Reel
	1-2396233-9	MRSSVODGI6SMGWT	Vertical	2.54 MM	Gray	G	16	Surface Mount	Tube
	2-2396233-0	MRSSVODGI6THT	Vertical	2.54 MM	Gray	G	16	Through Hole	Tube
	2-2396233-1	MRSSVODRI0SMJTR	Vertical	2.54 MM	Gray	R	10	Surface Mount	Tape & Reel
	2-2396233-2	MRSSVODRI0SMJT	Vertical	2.54 MM	Gray	R	10	Surface Mount	Tube
	2-2396233-3	MRSSVODRI0SMGWTR	Vertical	2.54 MM	Gray	R	10	Surface Mount	Tape & Reel
	2-2396233-4	MRSSVODRI0SMGWT	Vertical	2.54 MM	Gray	R	10	Surface Mount	Tube
	2-2396233-5	MRSSVODRI0THT	Vertical	2.54 MM	Gray	R	10	Through Hole	Tube
	2-2396233-6	MRSSVODRI6SMJTR	Vertical	2.54 MM	Gray	R	16	Surface Mount	Tape & Reel
	2-2396233-7	MRSSVODRI6SMJT	Vertical	2.54 MM	Gray	R	16	Surface Mount	Tube
	2-2396233-8	MRSSVODRI6SMGWTR	Vertical	2.54 MM	Gray	R	16	Surface Mount	Tape & Reel
	2-2396233-9	MRSSVODRI6SMGWT	Vertical	2.54 MM	Gray	R	16	Surface Mount	Tube
	3-2396233-0	MRSSVODRI6THT	Vertical	2.54 MM	Gray	R	16	Through Hole	Tube
2396234	2396234-1	MRSSVIDCI0SMJTR	Vertical	2.54 MM	Black	C	10	Surface Mount	Tape & Reel
	2396234-2	MRSSVIDCI0SMJT	Vertical	2.54 MM	Black	C	10	Surface Mount	Tube
	2396234-3	MRSSVIDCI0SMGWTR	Vertical	2.54 MM	Black	C	10	Surface Mount	Tape & Reel
	2396234-4	MRSSVIDCI0SMGWT	Vertical	2.54 MM	Black	C	10	Surface Mount	Tube
	2396234-5	MRSSVIDCI0THT	Vertical	2.54 MM	Black	C	10	Surface Mount	Tube
	2396234-6	MRSSVIDCI6SMJTR	Vertical	2.54 MM	Black	C	16	Through Hole	Tape & Reel
	2396234-7	MRSSVIDCI6SMJT	Vertical	2.54 MM	Black	C	16	Surface Mount	Tube
	2396234-8	MRSSVIDCI6SMGWTR	Vertical	2.54 MM	Black	C	16	Surface Mount	Tape & Reel
	2396234-9	MRSSVIDCI6SMGWT	Vertical	2.54 MM	Black	C	16	Surface Mount	Tube

ALCOSWITCH MINIATURE ROTARY SWITCH SERIES (MRSS)

Base PN	Part Number	Smart Part Description	Orientation	Centerline	Color	Code	Position	Termination Type	Packaging
2396234	1-2396234-0	MRSSVIDC16THT	Vertical	2.54 MM	Black	C	16	Surface Mount	Tube
	1-2396234-1	MRSSVIDG10SMJTR	Vertical	2.54 MM	Black	G	10	Through Hole	Tape & Reel
	1-2396234-2	MRSSVIDG10SMJT	Vertical	2.54 MM	Black	G	10	Surface Mount	Tube
	1-2396234-3	MRSSVIDG10SMGWTR	Vertical	2.54 MM	Black	G	10	Surface Mount	Tape & Reel
	1-2396234-4	MRSSVIDG10SMGWT	Vertical	2.54 MM	Black	G	10	Surface Mount	Tube
	1-2396234-5	MRSSVIDG10THT	Vertical	2.54 MM	Black	G	10	Through Hole	Tube
	1-2396234-6	MRSSVIDG16SMJTR	Vertical	2.54 MM	Black	G	16	Surface Mount	Tape & Reel
	1-2396234-7	MRSSVIDG16SMJT	Vertical	2.54 MM	Black	G	16	Surface Mount	Tube
	1-2396234-8	MRSSVIDG16SMGWTR	Vertical	2.54 MM	Black	G	16	Surface Mount	Tape & Reel
	1-2396234-9	MRSSVIDG16SMGWT	Vertical	2.54 MM	Black	G	16	Surface Mount	Tube
	2-2396234-0	MRSSVIDG16THT	Vertical	2.54 MM	Black	G	16	Through Hole	Tube
	2-2396234-1	MRSSVIDR10SMJTR	Vertical	2.54 MM	Black	R	10	Surface Mount	Tape & Reel
	2-2396234-2	MRSSVIDR10SMJT	Vertical	2.54 MM	Black	R	10	Surface Mount	Tube
	2-2396234-3	MRSSVIDR10SMGWTR	Vertical	2.54 MM	Black	R	10	Surface Mount	Tape & Reel
	2-2396234-4	MRSSVIDR10SMGWT	Vertical	2.54 MM	Black	R	10	Surface Mount	Tube
	2-2396234-5	MRSSVIDR10THT	Vertical	2.54 MM	Black	R	10	Through Hole	Tube
	2-2396234-6	MRSSVIDR16SMJTR	Vertical	2.54 MM	Black	R	16	Surface Mount	Tape & Reel
	2-2396234-7	MRSSVIDR16SMJT	Vertical	2.54 MM	Black	R	16	Surface Mount	Tube
	2-2396234-8	MRSSVIDR16SMGWTR	Vertical	2.54 MM	Black	R	16	Surface Mount	Tape & Reel
	2-2396234-9	MRSSVIDR16SMGWT	Vertical	2.54 MM	Black	R	16	Surface Mount	Tube
	3-2396234-0	MRSSVIDR16THT	Vertical	2.54 MM	Black	R	16	Through Hole	Tube
2396236	2396236-1	MRSSH4DC10SMGWTR	Horizontal	1.27 MM	Stainless Steel	C	10	Surface Mount	Tape & Reel
	2396236-2	MRSSH4DC10SMGWT	Horizontal	1.27 MM	Stainless Steel	C	10	Surface Mount	Tube
	2396236-3	MRSSH4DC10THT	Horizontal	1.27 MM	Stainless Steel	C	10	Through Hole	Tube
	2396236-4	MRSSH4DC16SMGWTR	Horizontal	1.27 MM	Stainless Steel	C	16	Surface Mount	Tape & Reel
	2396236-5	MRSSH4DC16SMGWT	Horizontal	1.27 MM	Stainless Steel	C	16	Surface Mount	Tube
	2396236-6	MRSSH4DC16THT	Horizontal	1.27 MM	Stainless Steel	C	16	Through Hole	Tube
	2396236-7	MRSSH4DG10SMGWTR	Horizontal	1.27 MM	Stainless Steel	G	10	Surface Mount	Tape & Reel
	2396236-8	MRSSH4DG10SMGWT	Horizontal	1.27 MM	Stainless Steel	G	10	Surface Mount	Tube
	2396236-9	MRSSH4DG10THT	Horizontal	1.27 MM	Stainless Steel	G	10	Through Hole	Tube
	1-2396236-0	MRSSH4DG16SMGWTR	Horizontal	1.27 MM	Stainless Steel	G	16	Surface Mount	Tape & Reel
	1-2396236-1	MRSSH4DG16SMGWT	Horizontal	1.27 MM	Stainless Steel	G	16	Surface Mount	Tube
	1-2396236-2	MRSSH4DG16THT	Horizontal	1.27 MM	Stainless Steel	G	16	Through Hole	Tube
	1-2396236-3	MRSSH4DR10SMGWTR	Horizontal	1.27 MM	Stainless Steel	R	10	Surface Mount	Tape & Reel
	1-2396236-4	MRSSH4DR10SMGWT	Horizontal	1.27 MM	Stainless Steel	R	10	Surface Mount	Tube
	1-2396236-5	MRSSH4DR10THT	Horizontal	1.27 MM	Stainless Steel	R	10	Through Hole	Tube
	1-2396236-6	MRSSH4DR16SMGWTR	Horizontal	1.27 MM	Stainless Steel	R	16	Surface Mount	Tape & Reel
	1-2396236-7	MRSSH4DR16SMGWT	Horizontal	1.27 MM	Stainless Steel	R	16	Surface Mount	Tube
	1-2396236-8	MRSSH4DR16THT	Horizontal	1.27 MM	Stainless Steel	R	16	Through Hole	Tube

ALCOSWITCH MINIATURE ROTARY SWITCH SERIES (MRSS)

ORDERING INFORMATION



[te.com](https://www.te.com)

© 2022 TE Connectivity. All Rights Reserved.

ALCOSWITCH, TE connectivity (logo) and Every Connection Counts are trademarks owned or licensed by TE Connectivity. All other logos, products and/or company names referred to herein might be trademarks of their respective owners.

While TE has made every reasonable effort to ensure the accuracy of the information in this brochure, TE does not guarantee that it is error-free, nor does TE make any other representation, warranty or guarantee that the information is accurate, correct, reliable or current. TE reserves the right to make any adjustments to the information contained herein at any time without notice. TE expressly disclaims all implied warranties regarding the information contained herein, including, but not limited to, any implied warranties of merchantability or fitness for a particular purpose. The dimensions in this catalog are for reference purposes only and are subject to change without notice. Specifications are subject to change without notice. Consult TE for the latest dimensions and design specifications.

07/22 MU