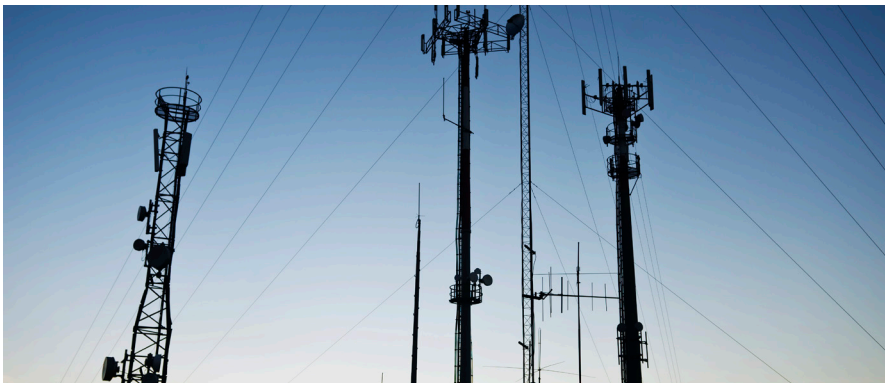


HIGH POWER PIN & SOCKET PORTFOLIO

ICCON BLOCK & ICCON INSERT PRODUCTS



High Power Pin & Socket Portfolio

OVERVIEW

Our new ICCON Block and ICCON Insert high power pin and socket products can offer flexible design options and a floating feature for easy installation for applications up to 350A. Easy installation is enabled by an optional floating feature on our ICCON Insert products that allows for +/- 1mm radial misalignment when mating two printed circuit boards (PCBs) or busbars. Flexible design options in various mounting types that can fit different assembly process requirements, standard pin sizes which can support 30A to 350A of power, and different lengths of power pins for customizable stack height options. By using our proven CROWN BAND Plus socket design in all sizes, this portfolio can provide low contact resistance and low power loss.



BENEFITS

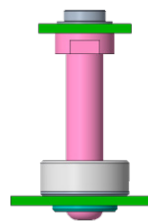
- Easy installation
- Flexible design options
- High power efficiency

APPLICATIONS

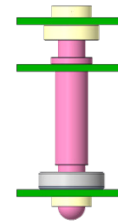
- Switches
- Servers
- Storage devices
- Wireless
- Industrial
- Test & Measurement

Application Examples

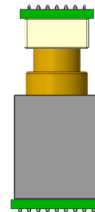
Board-to-Board



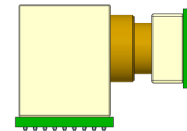
ICCON Insert
(Mezzanine)



ICCON Insert 3-Piece
(Mezzanine)

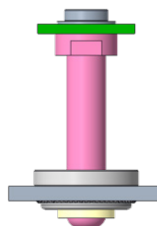


ICCON Block
(Mezzanine)



ICCON Block
(Right Angle)

Board-to-Busbar



ICCON Insert
(Mezzanine)

High Power Pin & Socket Portfolio

ICCON Insert Pin & Socket Products

FEATURES

- Optional floating feature can provide +/- 1mm floating in radial direction
- Current capacity up to 350A
- Pin sizes: 3.6mm/70A, 6mm/120A, 8mm/200A, 10.3mm/350A
- Various mounting types available:
 - SMT supports different board mounting stack heights (PCB applications)
 - Press-fit supports busbar applications
- Flexible stack heights with no additional tooling needed



PART INFORMATION

TE Part Number	Product Type	Pin Size	Mounting Type	Application Type	Floating Feature
2361483-1	Socket	8mm	SMT	Board-to-Board	Yes
2361493-1	Pin	8mm	Screw	Board-to-Board	--
1-2361483-1	Socket	8mm	Press Fit for busbar	Board-to-Busbar	Yes
2361493-2	Pin	8mm	Screw	Board-to-Busbar	--
2361371-1	Socket	8mm	SMT	3-Piece Board-to-Board	No
2361417-1	Pin	8mm	Screw	3-Piece Board-to-Board	--
2361369-1	Socket	8mm	SMT	3-Piece Board-to-Board	Yes

ICCON Block Pin & Socket Products

FEATURES

- Current capacity up to 350A
- Can fit different stack heights
- Use upgraded high performance Crown Band Plus contacts
- Right-angle and vertical PCB mount orientation for board-to-board applications
- Mounting type: press fit
- Pin sizes: 3.6mm/70A, 6mm/120A, 8mm/200A, 10.3mm/350A



ORDERING INFORMATION

TE Part Number	Product Type	Pin Size	Mounting Orientation
2358715-1	Socket	10.3mm	Right angle
2358714-1	Pin	10.3mm	--
2368390-1	Socket	10.3mm	Vertical

Connect With Us

We make it easy to connect with our experts and are ready to provide all the support you need. Visit te.com/support to chat with a TE Solution Consultant.

te.com

CROWN BAND, ICCON, TE Connectivity, TE Connectivity (logo) and Every Connection Counts are trademarks. All other logos, products and/or company names referred to herein might be trademarks of their respective owners.

The information given herein, including drawings, illustrations and schematics which are intended for illustration purposes only, is believed to be reliable. However, TE Connectivity makes no warranties as to its accuracy or completeness and disclaims any liability in connection with its use. TE Connectivity's obligations shall only be as set forth in TE Connectivity's Standard Terms and Conditions of Sale for this product and in no case will TE Connectivity be liable for any incidental, indirect or consequential damages arising out of the sale, resale, use or misuse of the product. Users of TE Connectivity products should make their own evaluation to determine the suitability of each such product for the specific application.

© 2020 TE Connectivity Ltd. family of companies All Rights Reserved.

6-1773983-5 06/20 Original