

AN12550

PNEV5190B evaluation board quick start guide

Rev. 1.5 — 23 April 2021
562315

Application note
COMPANY PUBLIC

Document information

Information	Content
Keywords	PN5190, PNEV5190B, PNEV5190M, PN5190 evaluation board, PN5190 customer board, PN5190 GUI, GUI, PN5190 support tool, NFC Cockpit
Abstract	This document describes the PNEV5190B V1.0 (PN5190 evaluation board), and how to use it. It describes the NFC Cockpit (PN5190 GUI Version 5.5.0 or later), which allows an easy basic access to the PN5190 registers and EEPROM in combination with basic reader functionality.



1 Revision history

Revision history

Rev	Date	Description
1.5	20210423	<ul style="list-style-type: none">The format of this application note has been redesigned to comply with the new identity guidelines of NXP Semiconductors.Section 6: updated
1.4	20201218	Update of the software section
1.3	20200929	Update versions numbers for PN5190 CQS1
1.2	20200109	Figure 6 layout corrected
1.1	20191217	AN number corrected, typos removed
1.0	20191128	First version

2 Introduction

This document describes the PNEV5190B (PN5190 evaluation board), which provides an easy evaluation of the features and functions of the PN5190.

It provides the first steps to operate the board, using the NFC Cockpit (PN5190 GUI Version 5.5.0 or higher).

The default antenna is a 45 mm x 45 mm antenna with some metal layer inside the antenna area. This antenna is not an optimum antenna as such, but intends to demonstrate the performance and register settings of the PN5190 under typical design constraints like LCD or some metal (e.g. PCB) inside the antenna area. The default settings provide an EMVC0 3.0 L1 analog compliance under the assumption that the antenna surface is a few mm above the antenna PCP.

2.1 PN5190 registers and EEPROM concept

The PN5190 uses internal registers to adapt and optimize the functionality and performance for each of the supported protocols and data rates dependent on the connected antenna, matching network and receiver path. It offers an EEPROM, which contains the default settings for all the supported protocols. These settings are loaded into the registers with the LOAD_RF_CONFIGURATION (0Dh) command for each supported protocol and data rate.

The default EEPROM configuration settings are optimized for the 45 mm x 45 mm antenna of the board PNEV5190B and can be changed by the user in case a customized antenna and matching network is used. The command LOAD_RF_CONFIGURATION allows initializing multiple registers with an efficient single command and allows distinguishing between transmit and receive configuration. Update of the registers relevant for a selected protocol is done by copying the content of EEPROM addresses to registers. Not all protocols require the initialization of all or the same registers, the command LOAD_RF_CONFIGURATION considers this by initializing the registers relevant for the currently selected protocol only.

The EEPROM content can be updated using the command UPDATE_RF_CONFIGURATION (0Eh). The command does not require any physical EEPROM address, but works directly with the register address information and the protocol for which this data is intended to be used. This allows a convenient initialization of all relevant values for operation.

Some of these settings can or even **must** be adapted toward a new antenna design (e.g. the dynamic power control). All those design-specific settings should be stored in the PN5190 EEPROM to allow a proper functionality.

Some EEPROM configuration data is independent from the used protocols and defines e.g. the startup behavior of the PN5190 or the functionality of low-power card detection (LPCD). This configuration data might also be adapted for optimum performance of the chip.

2.2 PNEV5190B concept

The basic **concept of the PNEV5190B** is to enable the user to perform a quick evaluation of the PN5190 and also connect their own antenna to the PNEV5190B board. In addition, dedicated boards which allow to solder custom antenna matching components are available. The NFC Cockpit can be used to optimize the RF

performance of the PN5190 antenna tuning, to perform the DPC calibration and the related TX and RX optimization without touching any source code.

All the relevant registers can be modified and fine-tuned using the NFC Cockpit. After successful register optimization, the found settings can be stored in the PN5190 EEPROM.

The NFC Cockpit also allows a dump of the complete user EEPROM content into an XML file. This file then can be loaded again into the EEPROM. That allows to manage and exchange different user or antenna configurations. In addition, the optimized register settings using the NFC Cockpit can be used during user code development as well.

As soon as the register settings for the targeted protocols and data rates are defined, the NFC Reader Library including the HAL can be used to start the development of the user application. Examples illustrate the usage of the library for typical use cases.

The source code examples of the NFC Reader Library can be used to develop an own application directly on the Kinetis MCU K82 (see [\[4\]](#)) or can serve as a starting point for porting the NXP NFC Reader Library to any other microcontroller platform.

3 Hardware

The PNEV5190B V1.0, as shown in [Figure 1](#), provides some test functions which might not be used for the typical hardware and software evaluation. The PNEV5190M (module) can be used as a simple standard reader module without modification. In addition, it can be used to define and optimize the analog settings for any connected antenna or it can be used to develop and modify any RFID and NFC application based on the NFC Reader Library.

3.1 Hardware introduction

The PN5190 is supplied with a supply voltage, which can be chosen between internal and external supply. For the internal supply either 5 V, 3.3 V or 1.8 V (for VDDIO) can be used. The external power supply must be between 5 V and 12 V DC (polarity does not matter) since the board provides a rectifier and LDO to supply the circuit with 6 V (optional, supply voltage ≥ 7.5 V), 5 V, 3.3 V and 1.8 V.

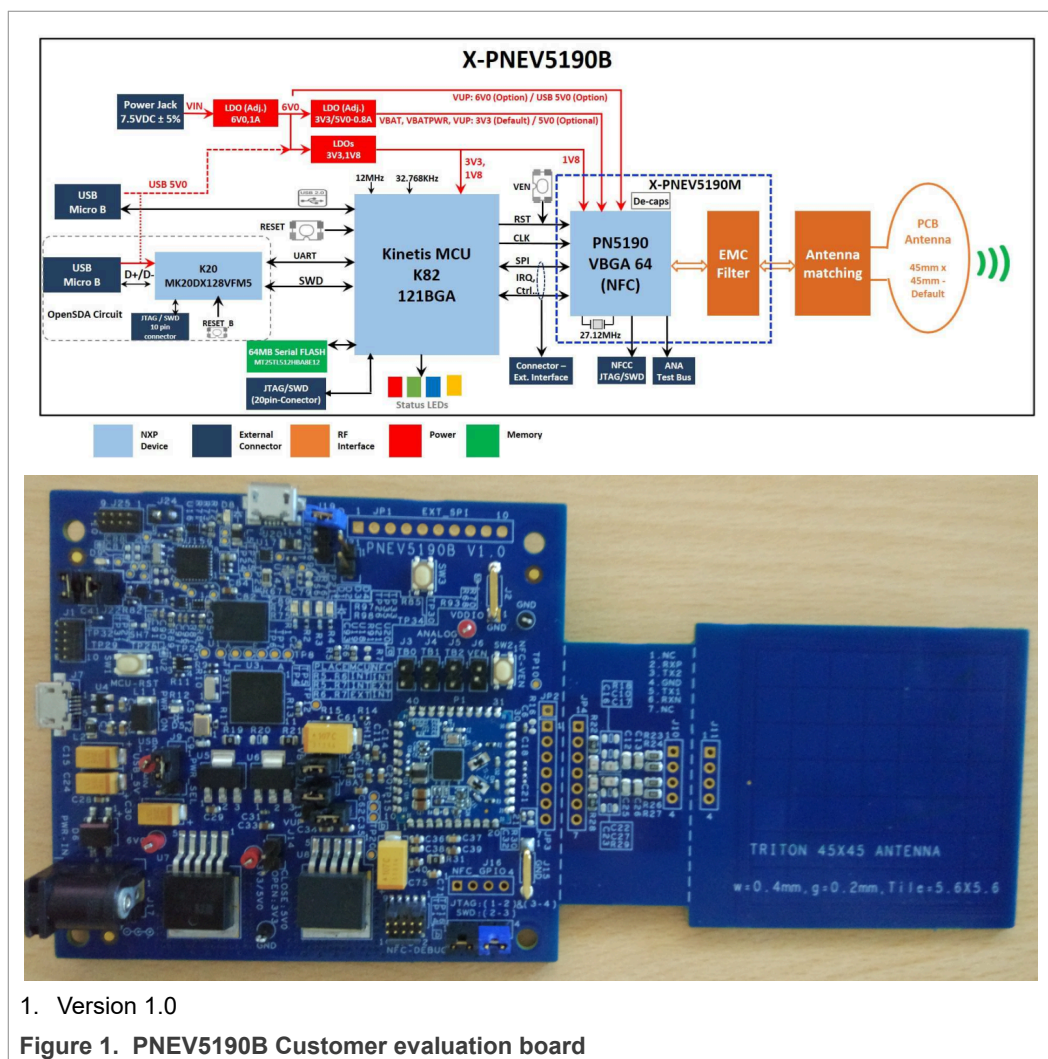
Warning: The PN5190 in default configuration requires an external power supply, i.e. the USB supply does not provide enough current.

The PN5190 is connected to a Kinetis K82 121BGA μ C via SPI. A specific firmware on the K82 allows using the PNEV5190B together with the NFC Cockpit.

The connection to the PC is done via USB micro connection.

Another connection option allows connecting a Linker / LPC-LINK2 board to the PNEV5190B with a debug cable. This allows the development of custom software or the execution of the NXP NFC Reader Library code including samples.

In case a different host microcontroller shall be used, the SPI interface is available for connection to an external host (the onboard K82 is not used in this case).



The PNEV5190B customer evaluation board consists of 2 PCBs:

The PNEV5190B (base board) and the PNEV5190M (module board), as shown in [Figure 2](#) and [Figure 3](#). The PNEV5190M is soldered onto the PNEV5190B and contains the PN5190 itself and the major components, as required to operate the IC, e.g. the DC-DC inductor, the EMC filter and some block capacitors. The layout of the module board can be taken as reference.

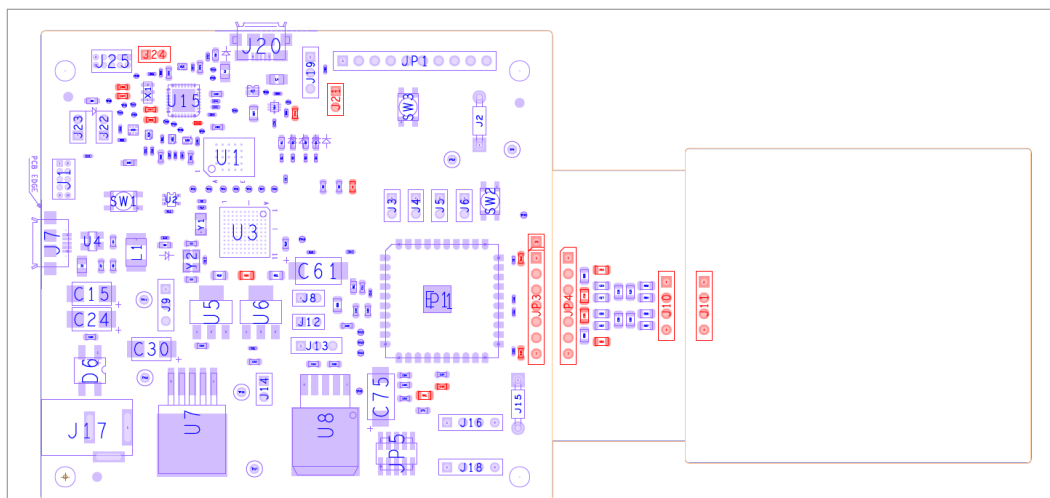


Figure 2. PNEV5190B base board top view (placement)

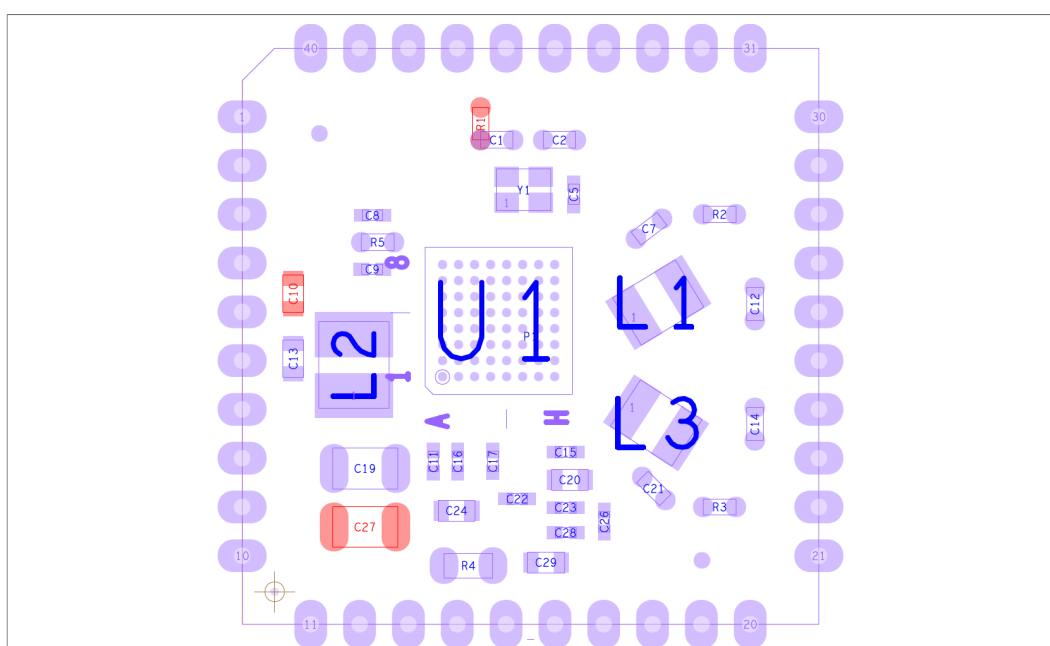


Figure 3. PNEV5190M Module board top view (placement)

3.2 Schematics

The complete schematics of the PNEV5190B base board are shown in the following figures. The more detailed reference data is available in [\[5\]](#).

3.2.1 K82

The PNEV5190B uses a Kinetis K82 121BGA microcontroller ([Figure 4](#)).

An LPC Link can be connected to the K82 via the JTAG/SWD interface (see [Figure 5](#)).

In addition, an OpenSDA interface is provided for debugging the K82 by using a Kinetis MK20DX128VFM5 (Figure 6).

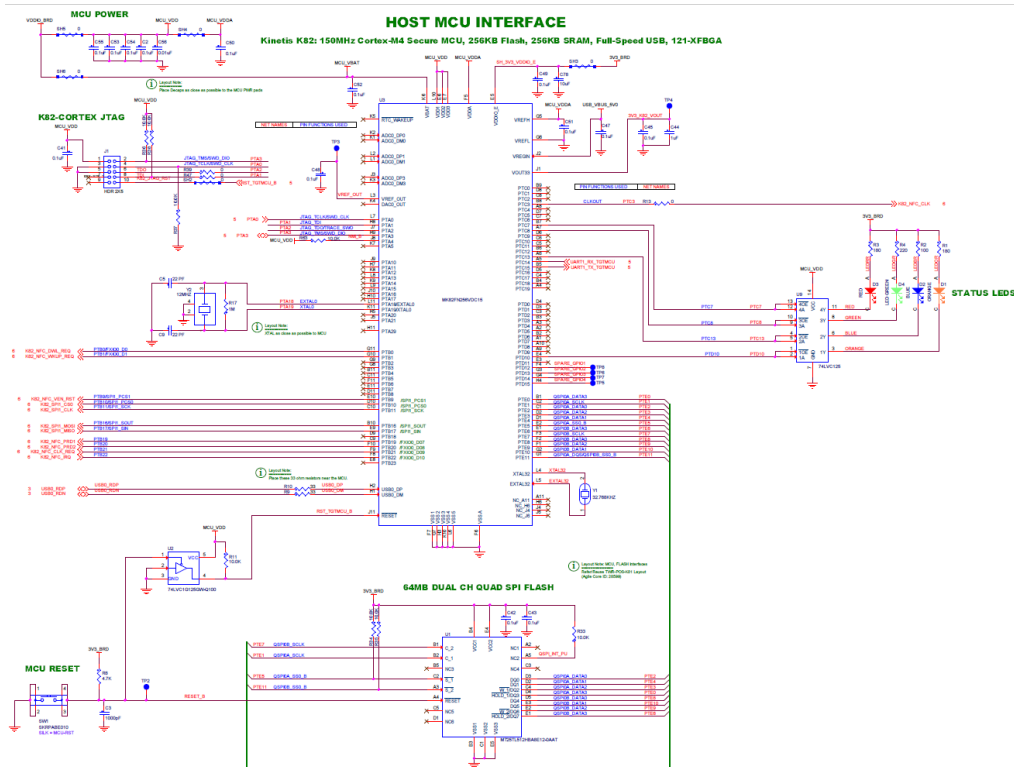


Figure 4. K82 main schematics

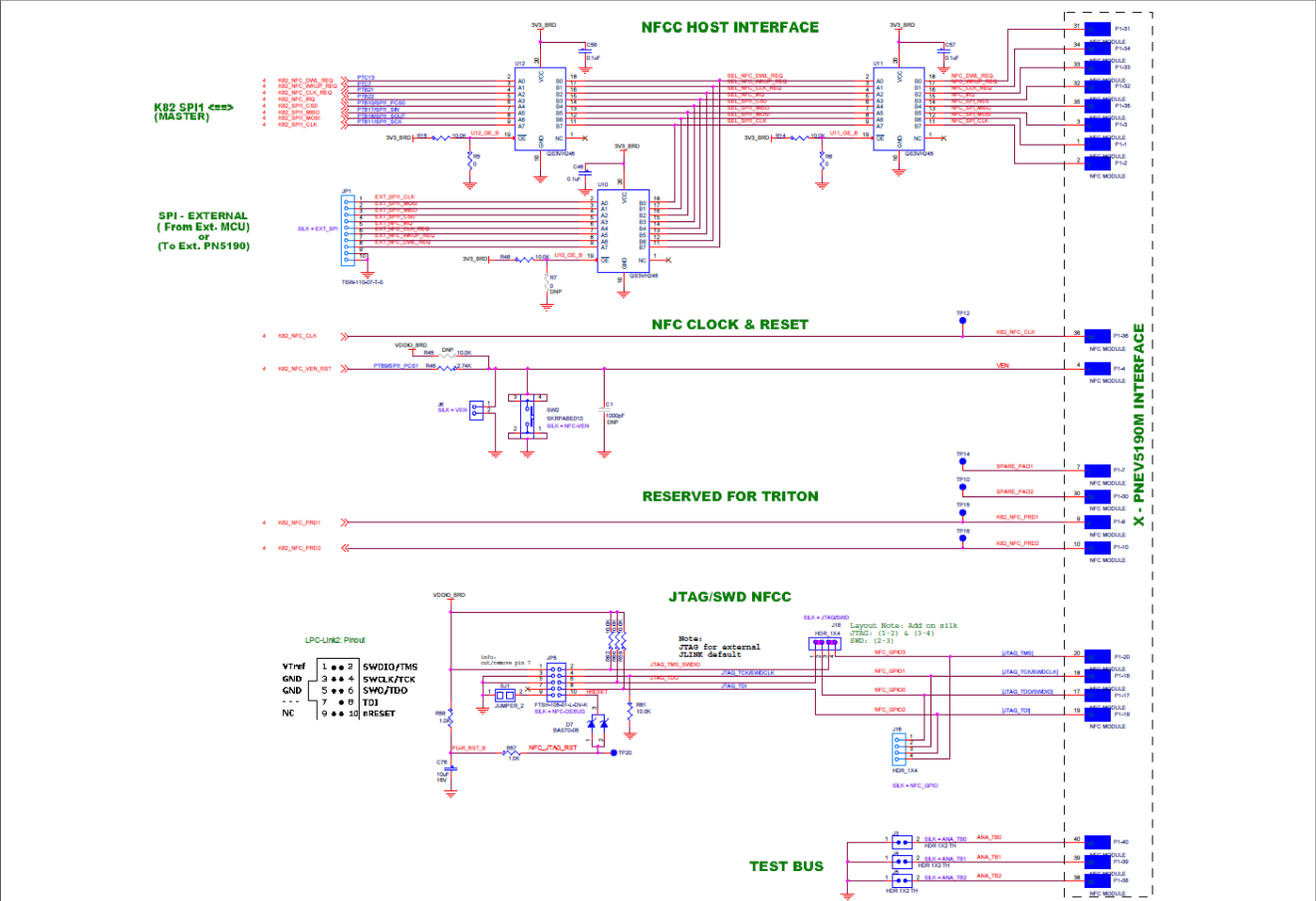


Figure 5. PNEV5190M interface

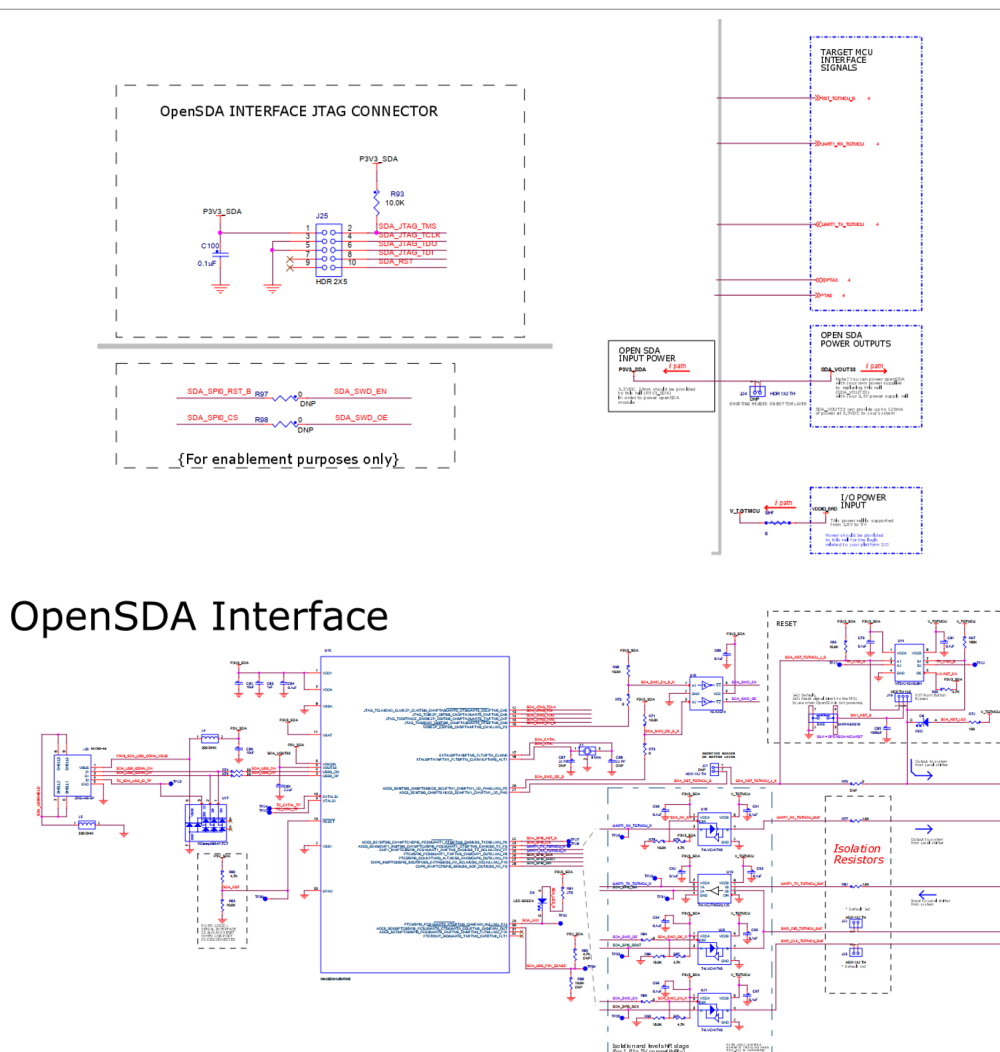


Figure 6. OpenSDA for K82 (MK20DX128VFM5)

3.2.2 Power supply

The default settings use the external power supply from the power jack connector. The external power supply must always be used, if the DC-DC is enabled (default). The DC power input can cover a DC voltage around 7.5 V with a current of at least 800 mA. The polarity does not matter, since there is a rectifier foreseen. The inrush current of the DC-DC can be up to 1.6 A, when enabling the RF field.

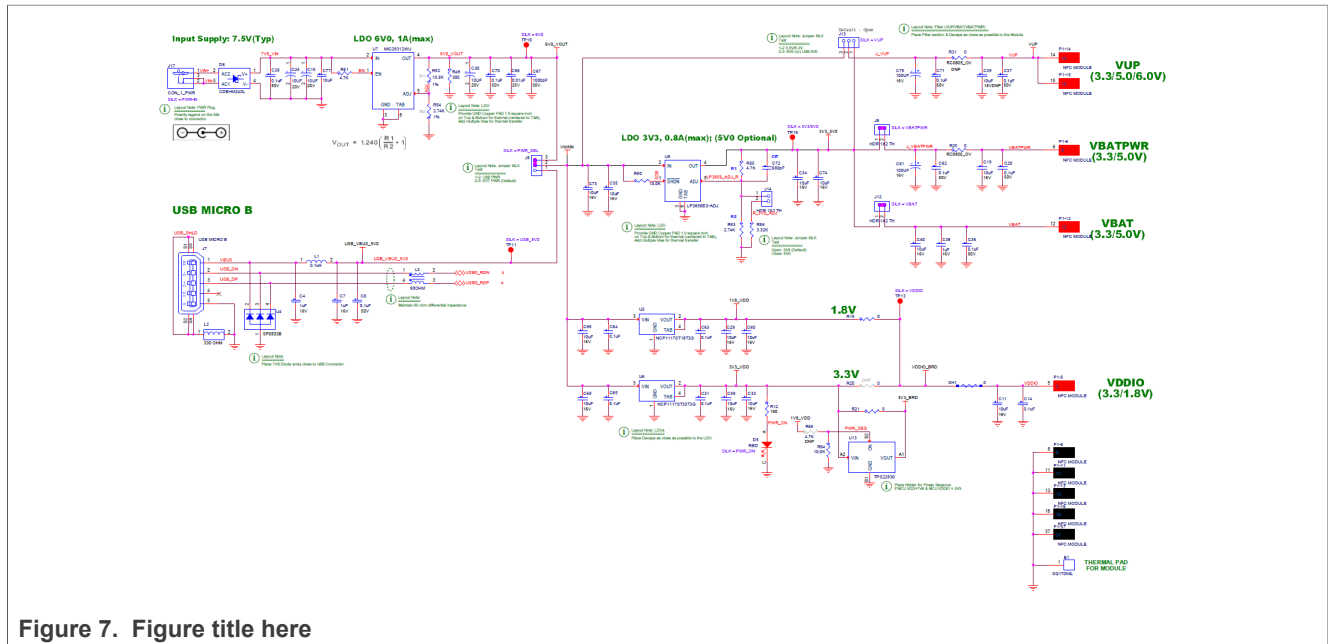


Figure 7. Figure title here

As soon as the board is supplied with power, the red LED D5 must be on.

The PNEV5190B has different supply pins for the PNEV5190M (module board) as shown in [Table 1](#). For further details on the supply options of the PN5190 itself, refer to [\[1\]](#).

Table 1. PNEV5190M module supply pins

Attention: there are PN5190 (IC) pins with the same name!

Pin Name	Type	Description
VBAT	Supply input	3.3 V Main Input Supply Voltage
VBATPWR	Supply input	= VBAT = 3.3 V Main Input Supply Voltage
VDDIO	Supply input	1.8 V IO power supply
VUP	-	not used in default configuration

The PN5190B base board provides four LDOs:

1. U8 for supplying the PNEV5190M with VBAT. The default configuration provides VBAT = 3.3 V. Optionally this voltage can be set to 4.8 V.
2. U5 for supplying the VDDIO and the μ C supply (VDDIO_BRD = MCU_VDD = MCU_VDDA) with 3.3 V. This LDO is not used in default configuration.
3. U6 for supplying the VDDIO and the μ C supply (VDDIO_BRD = MCU_VDD = MCU_VDDA) with 1.8 V. This LDO is used in default configuration.
4. U7 for supplying the overall board with 6 V. This LDO is used in default configuration.

The default configuration uses the following jumpers closed:

J9: 2-3 -> external power supply

J8: closed -> VBATPWR supplied with VBAT = 3.3 V

J12: closed -> VBAT supplied with 3.3 V

The default configuration uses the following jumpers open:

J3: open

J4: open

J5: open

J6: open

J13: open (this jumper can be used to bypass the DC-DC, but only if the EEPROM settings are done properly AND the required board modifications are made properly)

J14: open

J8 can be used to measure the current consumption of the TX driver circuit including the DC-DC.

J12 can be used to measure the supply current consumption, excluding the TX driver part.

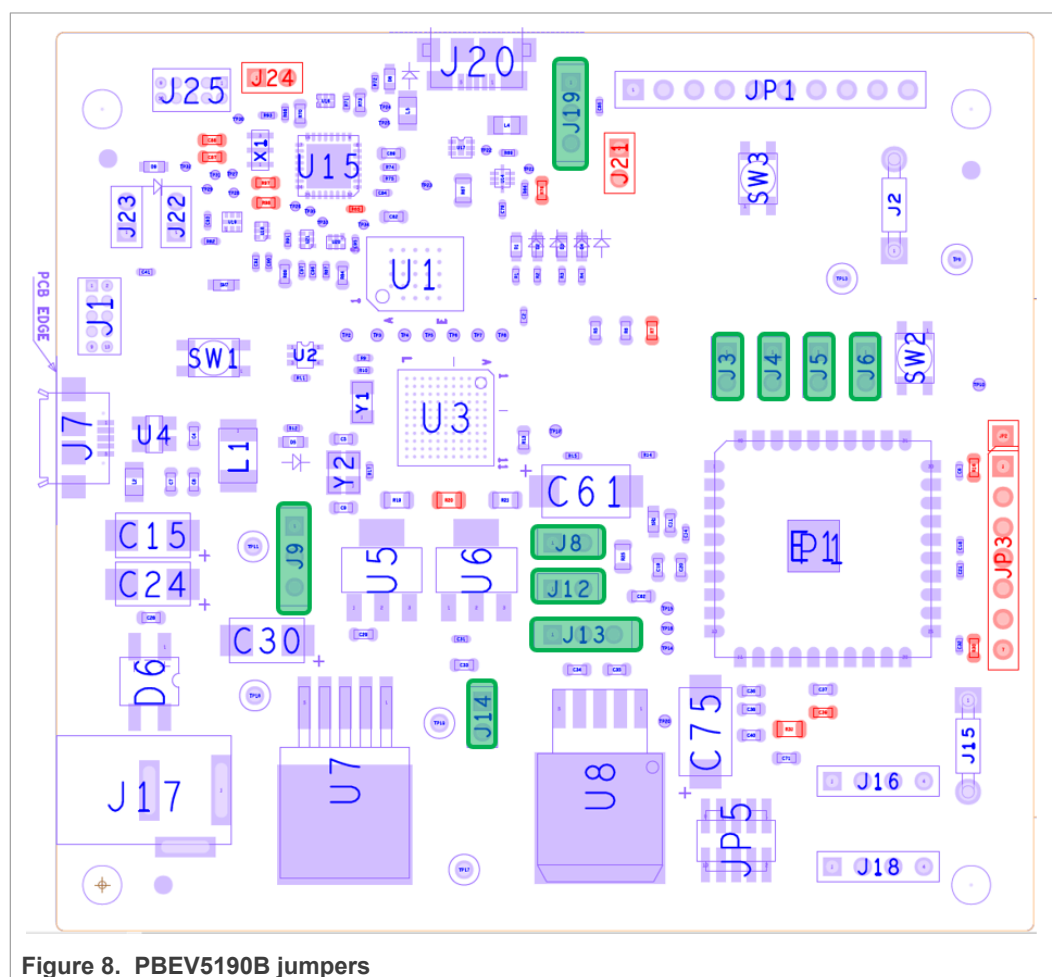


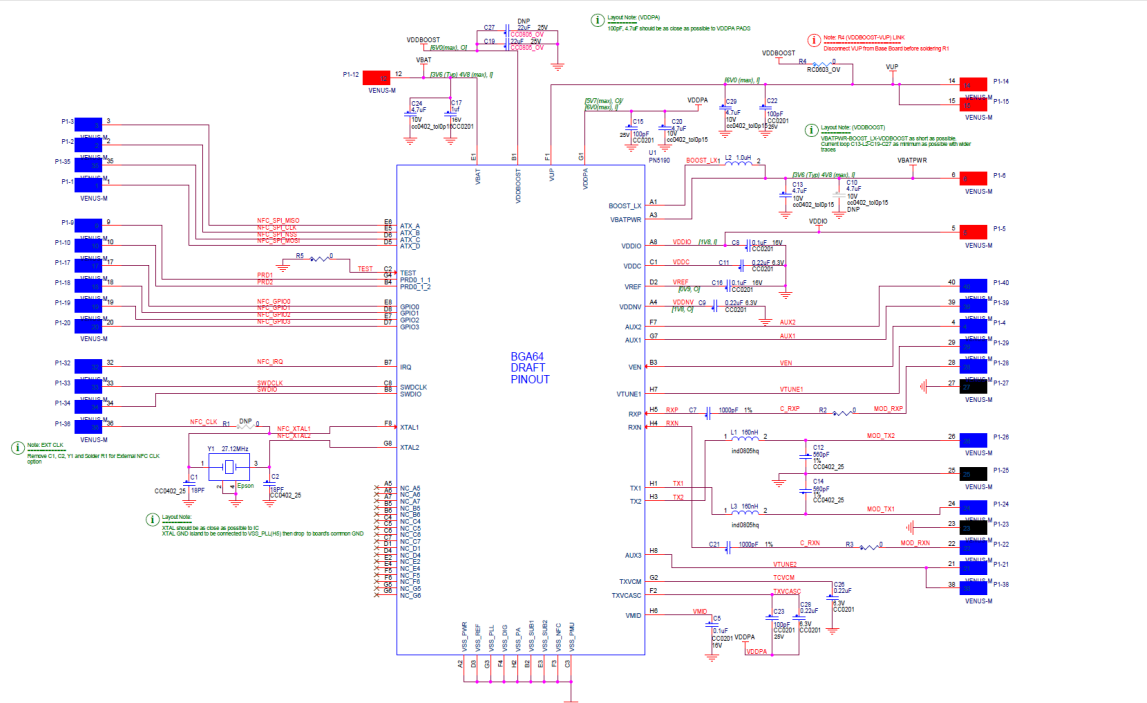
Figure 8. PBEV5190B jumpers

3.2.3 PNEV5190M module board

The PNEV5190M module board is shown in [Figure 9](#). The module board contains the most relevant components, directly connected to the PN5190, i.e. the EMC filter inductors, the DC-DC inductor, the major block capacitors and the 27.12 MHz crystal.

The default clock is based on this 27.12 MHz crystal, but the board supports the option to test external clock input, if needed.

The relevant test signals can be derived from the test pins at the bottom of the board.



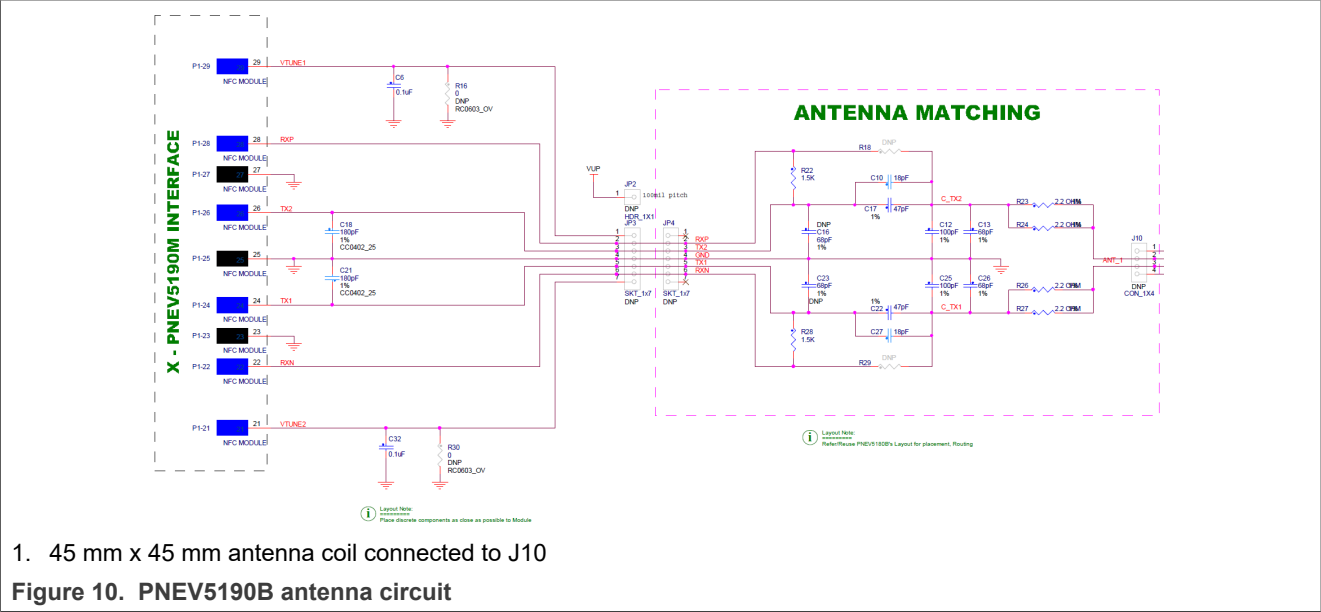
1. GND pads: 8,11,13,16,37
2. RFU pads: 7, 30, 31

Figure 9. PNEV5190M module board schematics

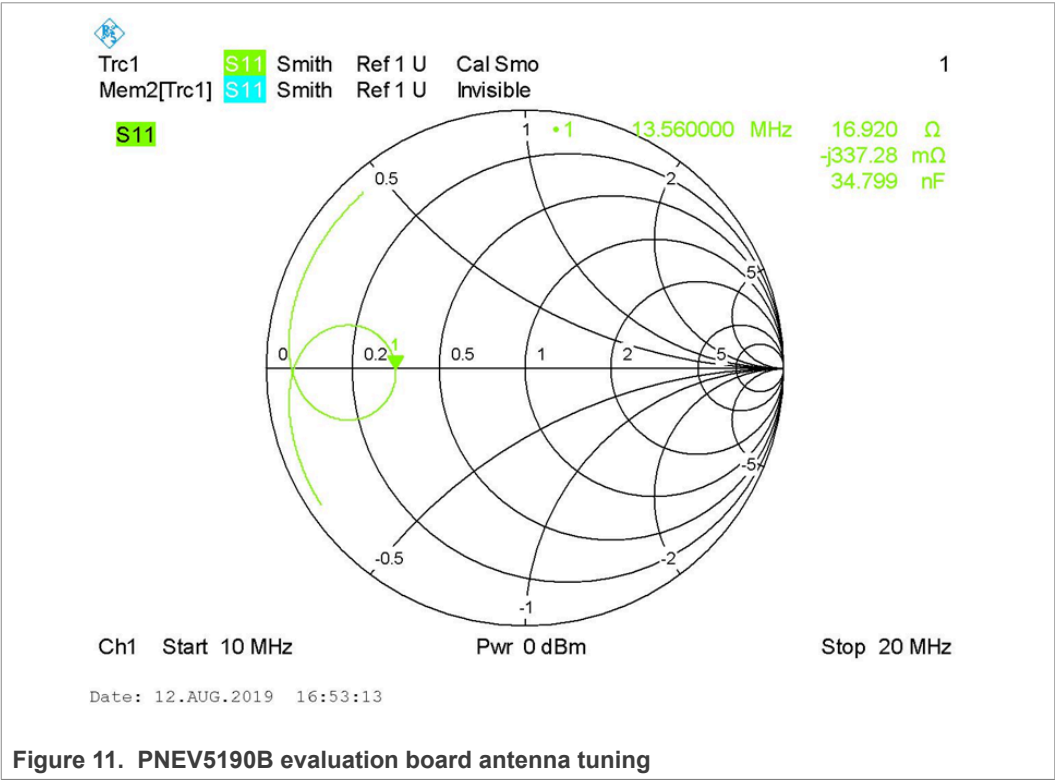
3.2.4 PNEV5190 antenna

The antenna connection uses the standard tuning circuit. The EMC filter is designed with a cut-off frequency of $f_{\text{EMC}} = 14.25 \text{ MHz}$, and the antenna impedance is tuned to $Z = 15 \dots 16 \Omega$.

The details of antenna tuning are described in [2].



The PN5190 antenna tuning (see [Figure 11](#)) improves the transfer function compared to the standard “asymmetrical” tuning and therefore allows using a higher system Q factor, which results in a higher field strength. The disadvantage of the loading effect, which causes an increased current ITVDD, is compensated with the PN5190 Dynamic Power Control (DPC, for details refer to [\[3\]](#)). For more details on the PN5190 antenna tuning, refer to [\[2\]](#) PN5190 Antenna design guide.



3.3 K20 OpenSDA interface

Software for K20 will come in future:

To use the OpenSDA debug for the K82, JP24 needs to be closed (default open)

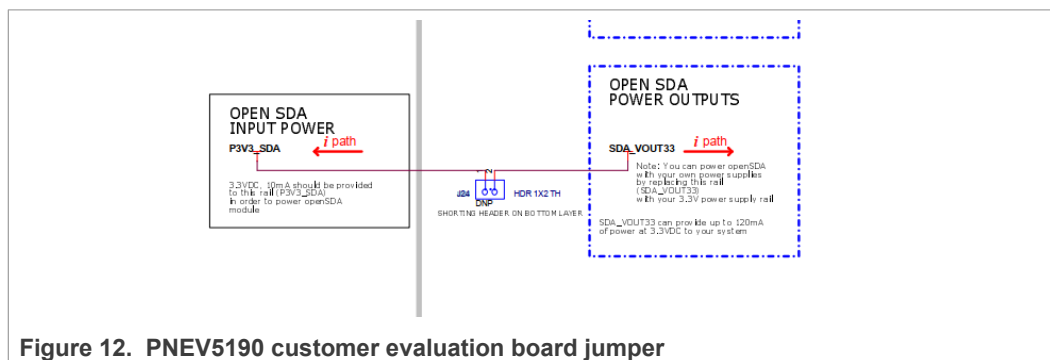


Figure 12. PNEV5190 customer evaluation board jumper

3.4 LED status indication

There is a power red LED, indicating the board is properly powered. It is driven by the 3V3 output of U6.

There are four LEDs (D1...D4) available, indicating some function of the PNEV5190B:

1. When RESET button is released, the LEDs flash to indicate that the secondary K82 FW and the PN5190 FW is working properly.
2. The blue LED indicates, that no VCOM interface is opened.
3. The green LED turns on, when the VCOM interface is opened.
4. The orange LED indicates a communication via SPI.

3.5 Jumper settings

The default jumper settings allow a direct use with the USB connector and an external power supply. This might show limited performance due to a current limitation on the USB host. So for real performance measurements, the external power supply should be used.

3.5.1 USB only

USB only (no external power supply) is not recommended at all. Most USB Hosts cannot supply sufficient power over all nor handle an inrush current of 1.6 A.

3.5.2 External power supply

The default configuration requires an external 5 V DC power supply, providing at least 800 mA (up to 1.6 A inrush).

3.5.3 First-time use

Make sure that the K82 is flashed with the correct firmware NNC_uC_VCOM_03.05.09 (Compiled on Sep 24 2020 13:37:14) or later.

4 PN5190 secure firmware update

The PN5190 supports secure firmware update and it provides an easy way to upload the firmware via the NFC Cockpit tool or by an application hosted on the microcontroller, which implements secure firmware update functionality.

This document describes the process of how to flash the PN5190 FW to the PNEV5190B evaluation board. It also explains how to prepare the firmware update software for any microcontroller connected to the PN5190 IC.

The PNEV5190B customer evaluation board and MCUXpresso IDE toolchain are used as a reference to describe the functionality.

4.1 Requirements

This section describes the system and hardware requirements needed to upload the new version of the PN5190 FW.

4.1.1 System requirements

NFC Cockpit tool requirements:

- The chapters below are describing the installation process of it
- PC with USB port running on Microsoft Windows 10 operating system
- VCOM CDC drivers (drivers are available in the installation package)

Firmware download library requirements:

- Secure FW upload demo application is available in the provided release package
- The demo application is prepared for the MCUXpresso IDE toolchain.

4.1.2 Hardware requirements

- Enabled SPI host connection between microcontroller and PN5190 IC
- USB connection between PC and microcontroller

Note:

PNEV5190B evaluation board provides all features required to test "Secure FW update".

4.2 Block diagram overview

At a very high level, the system is divided into three parts.

- PC host
- Microcontroller host
- PN5190

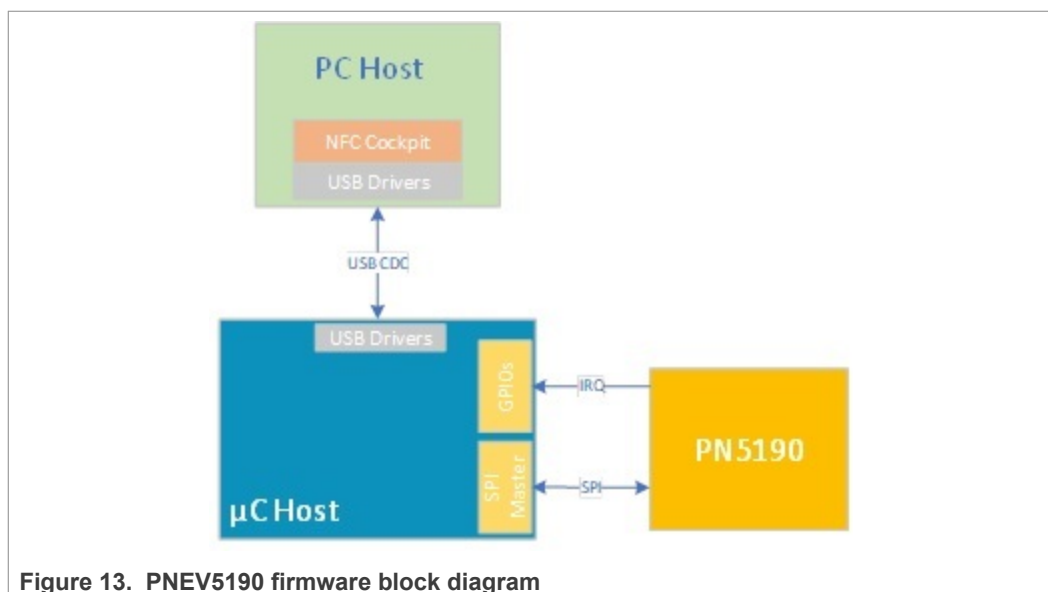


Figure 13. PNEV5190 firmware block diagram

4.2.1 PC host

The PC is hosting the NFC Cockpit tool, and it should provide a USB connection. The PC host is connected to the microcontroller host via a USB Serial VCOM interface.

PC host is optional; it is required in case of using the NFC Cockpit tool.

4.2.2 Microcontroller host

Microcontroller, in this setup, works as a medium between PC and PN5190. The purpose of it is to receive data from the PC over the USB interface and forward them to PN5190 via the SPI interface.

In case of setup, where secure FW update application is hosted on the microcontroller host, the app reads the firmware data from an external source and sends them to PN5190 IC via SPI interface.

4.2.3 PN5190

The PN5190 is a highly integrated high-performance full NFC Forum-compliant frontend IC for contactless communication at 13.56 MHz.

PN5190 supports secure FW updates, and guidelines are described in the next sections.

4.3 Reference application

NXP provides “DownloadLibEx1” application as a reference example, which demonstrates how to flash a new firmware by an application hosted on the target microcontroller. The example includes the implementation of all needed commands in the “Secure firmware download” mode.

The reference application package is prepared for the Kinetis K82 μ C, and it works together with the PNEV5190B development board. The project is built with the MCUXpresso IDE.

A reference example uses secure download library, which provides the implementation of the secure download APIs. It is recommended to use it in the customer application.

4.3.1 Preconditions

It is required to set up the system comprising the PNEV5190B evaluation board and LPC-Link2 or Segger J-Link, as shown in the figure below.

To be able to use the prepared software package, all components listed in the table below are required:

Table 2. Development Environment

Device	Version	Description
PNEV5190B	1.0 or higher	PNEV5190 Customer evaluation board (hardware)
LPC-LINK2	1.0	Standalone debug adapter (hardware)
MCUXpresso IDE	11.2.0 or higher	Development IDE (PC software)

The next figure shows how to connect the PNEV5190B Development board with Segger J-Link and PC. The development board in this setup is powered by USB (which is not recommended if the RF Front-End is used).

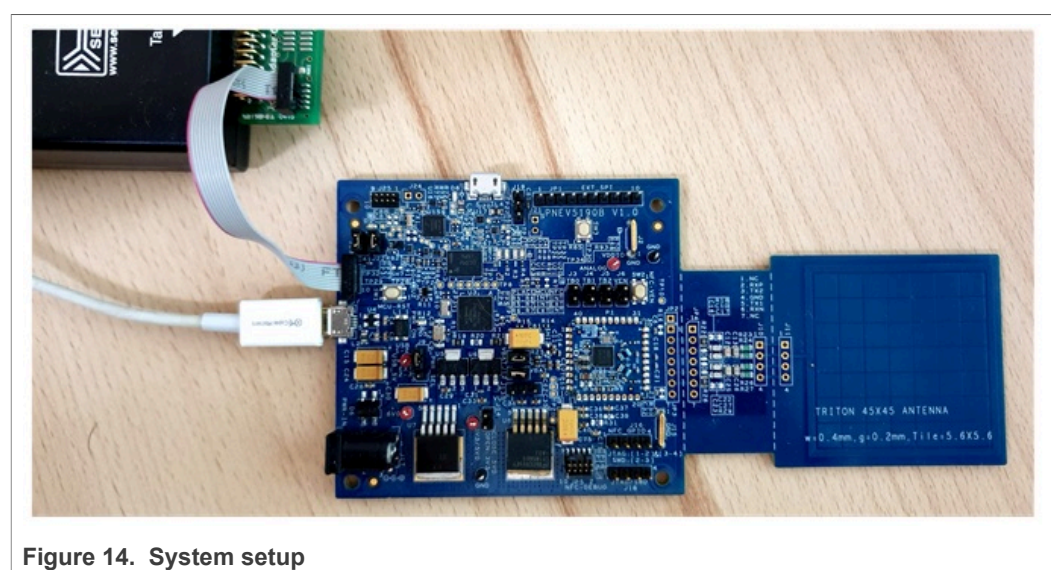


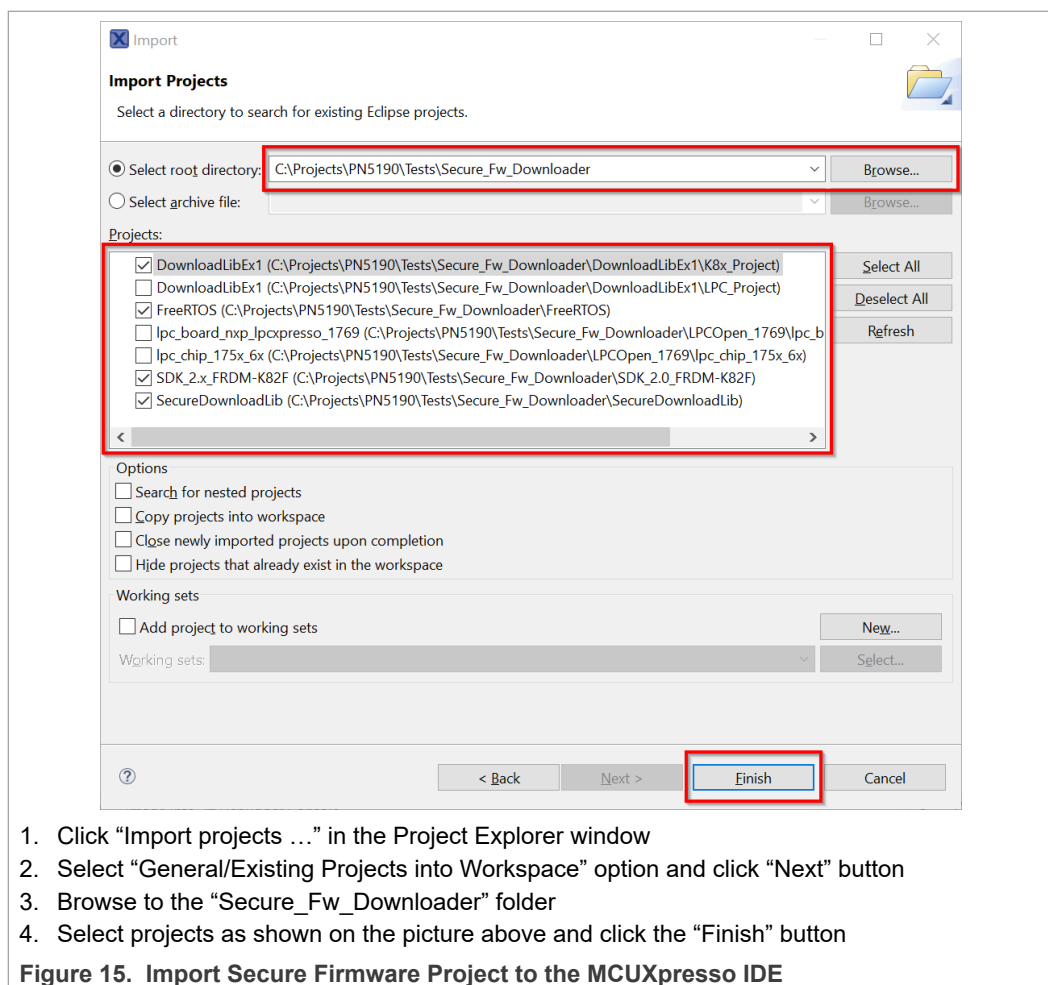
Figure 14. System setup

Before continuing, it is necessary to download the latest PN5190 SW release package and extract it to an empty folder.

4.3.2 Import reference project

To import secure firmware update project, follow steps below:

1. Open MCUXpresso IDE in a new workspace
2. Import project from the previously extracted folder

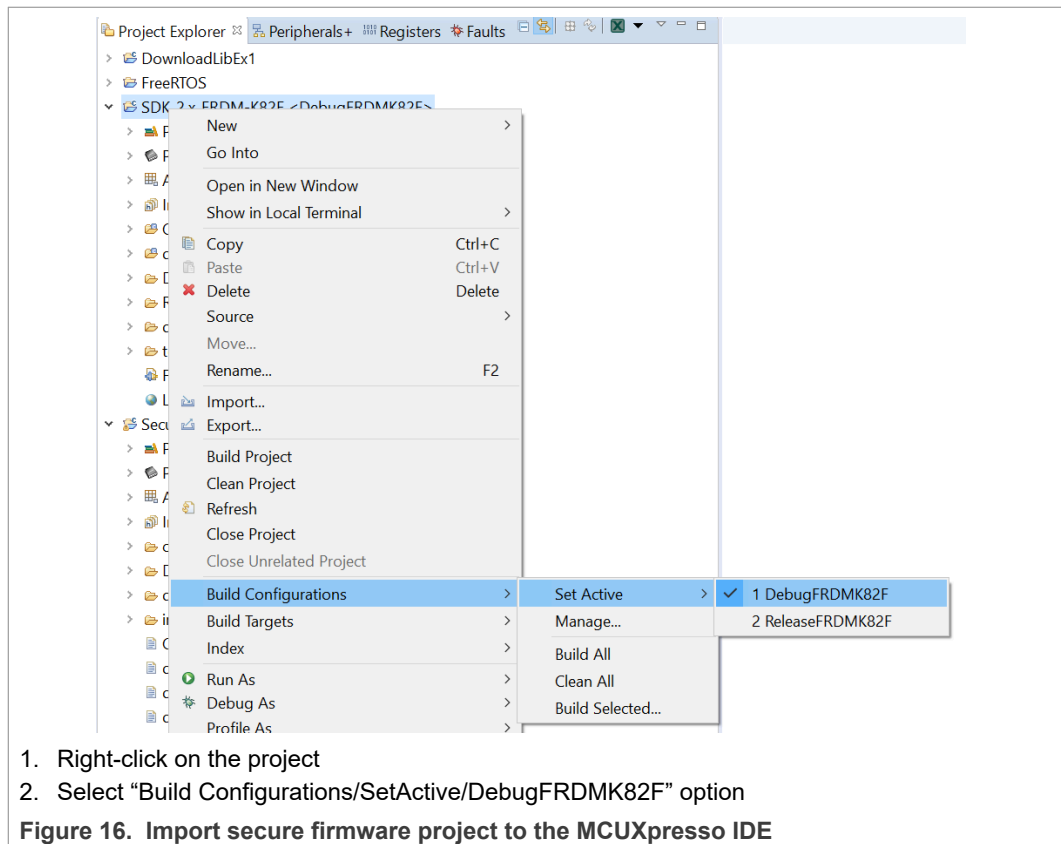


1. Click "Import projects ..." in the Project Explorer window
2. Select "General/Existing Projects into Workspace" option and click "Next" button
3. Browse to the "Secure_Fw_Downloader" folder
4. Select projects as shown on the picture above and click the "Finish" button

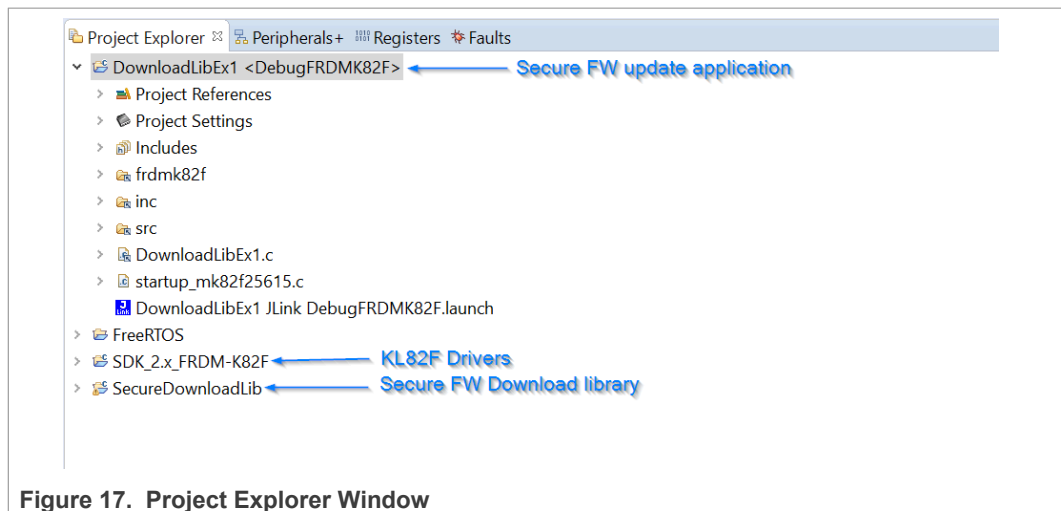
Figure 15. Import Secure Firmware Project to the MCUXpresso IDE

4.3.3 Build, run and debug project

After a successful project import, check for the correct project configuration. All three projects shall be configured for "DebugFRDMK82F".



After that step, the project structure shall look like in the picture below.



As a next step, it is necessary to build all projects. That can be achieved by clicking the "Build all projects" in the "Quickstart Panel".

The next step is to flash and debug the application. Highlight the "DownloadLibEx1" project in the "Project Explorer" window and click "Debug" in the "Quickstart Panel", as shown in the next figure. The MCUXpresso IDE builds the application, flash the application binary, and starts with the debugging process.

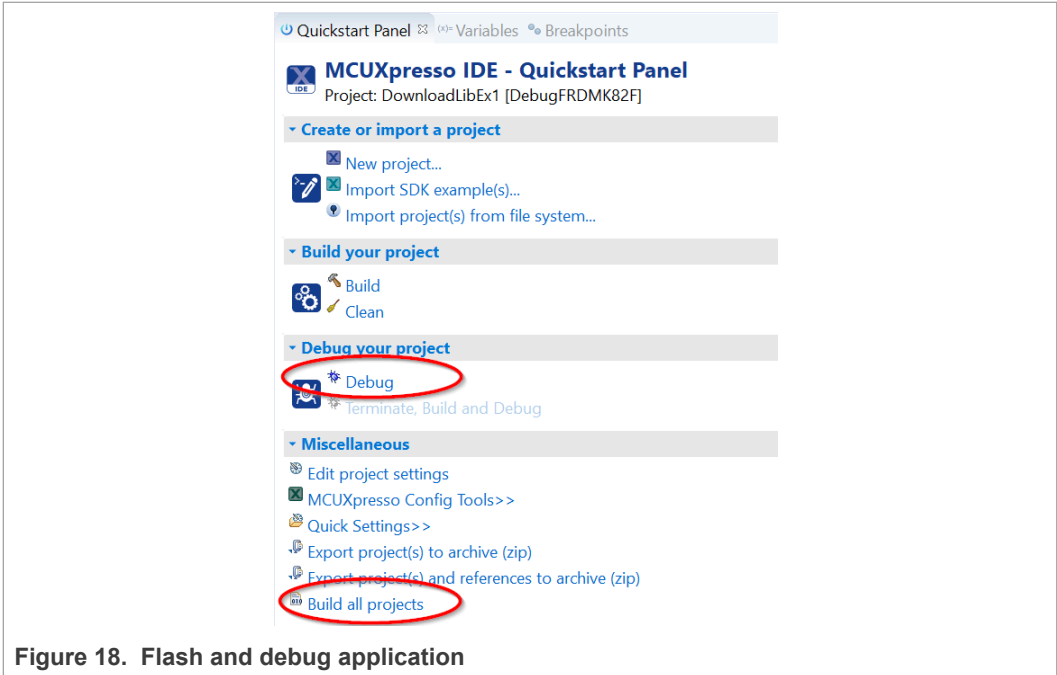


Figure 18. Flash and debug application

After that, the application starts, and it printout options for the supported tasks.

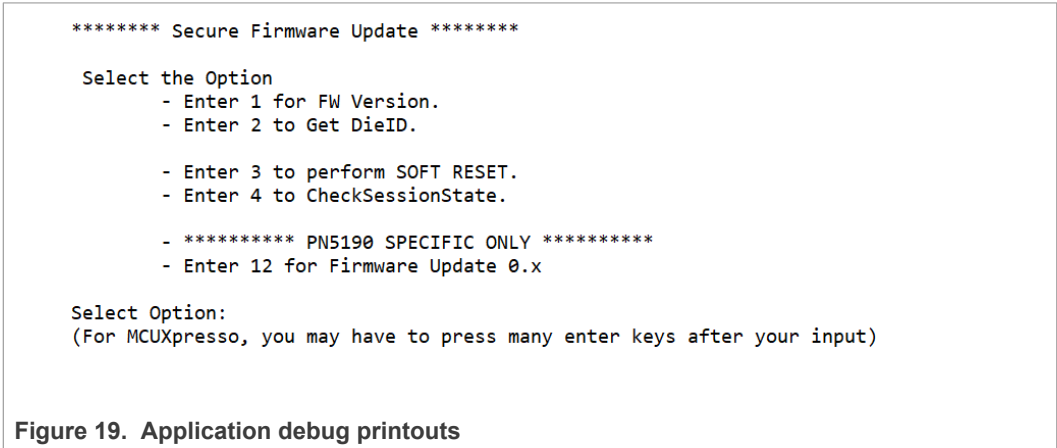


Figure 19. Application debug printouts

4.3.4 Secure download library

“Secure download library” is part of the reference application and provides an implementation of the secure download mode. The secure download library is written in C programming language, and it can be ported to any customer application running on the µC.

Secure download library contains an implementation of the platform (SPI interface and HW configuration), and this part of the library should be adopted in case it is used on any other platform.

It is highly recommended to use the secure download library in the customer application.

The table below lists all APIs supported by the library:

Table 3. API provided by secure download library

Device	Description
phDIhalHw_Pn5190_Download_Init	Initialize the download library.
phDIhalHw_Pn5190_Download_CheckIntegrity	Returns the integrity information of the existing firmware.
phDIhalHw_Pn5190_Download_CheckSessionState	Check and return the current download session state.

5 Software

The PNEV5190B evaluation board is delivered with a graphical user interface application (GUI), the NXP NFC Cockpit. The NFC Cockpit can be used to explore the functionality of the PN5190 and perform RF and antenna design-related tests. It allows a direct register access as well as EEPROM read and writes access, and it allows testing and calibrating the DPC. The NFC Cockpit therefore, can be used to configure and test the PN5190.

5.1 K82 firmware and driver

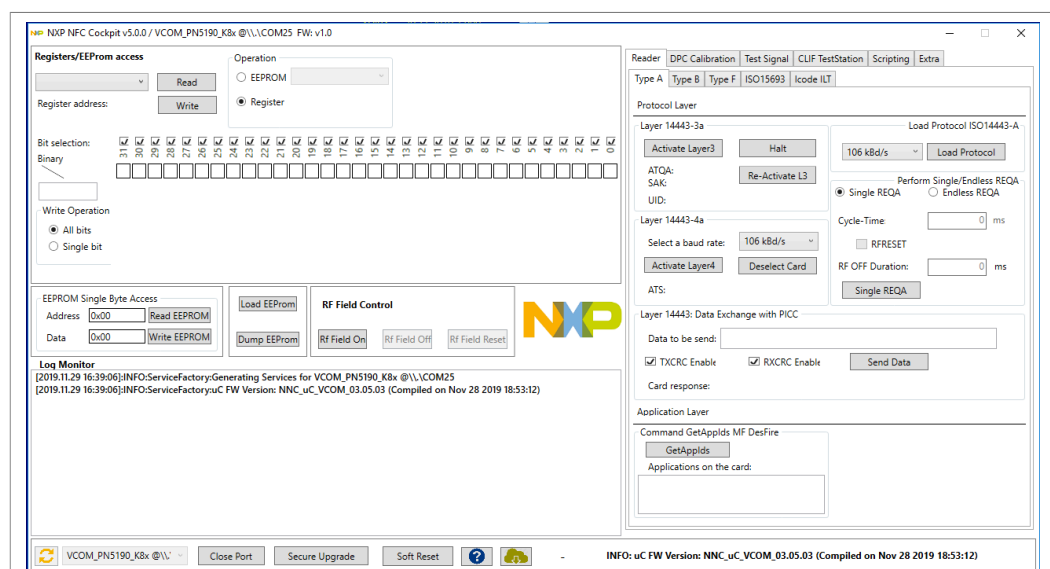
The K82 firmware is installed by default on the PNEV5190B and is ready to use. So, no Kinetis firmware installation is required, if the board is only used with the NFC Cockpit.

However, the K82 might be used for software development together with one of the samples (including the NXP NFC Reader Library). In this case, the K82 FW must be reinstalled afterwards, if the PNEV5190B is supposed to be used together with the NFC Cockpit again. Reason for this is that any software development using the MCUXpresso will erase the default firmware. Therefore, the K82 FW installation is described in the following section.

In any case, the correct PC driver must be installed, before the NFC Cockpit can be used with the PNEV5190B evaluation board.

5.2 PN5190 NFC Cockpit

The PN5190 NFC Cockpit can be installed and started (see [Figure 20](#)).



1. Status when starting the NFC Cockpit with connected PNEV5190B board

Figure 20. NFC Cockpit with PNEV5190B initial view

After starting the NFC Cockpit, the communication link between the PC and the PNEV5190B (via the K82 interface) is enabled automatically.

Note:

The PN5190 NFC Cockpit is a development tool, and therefore allows many different kinds of operations, even “useless” ones at a first glance. The correct use of the NFC Cockpit is required to operate the PN5190 properly.

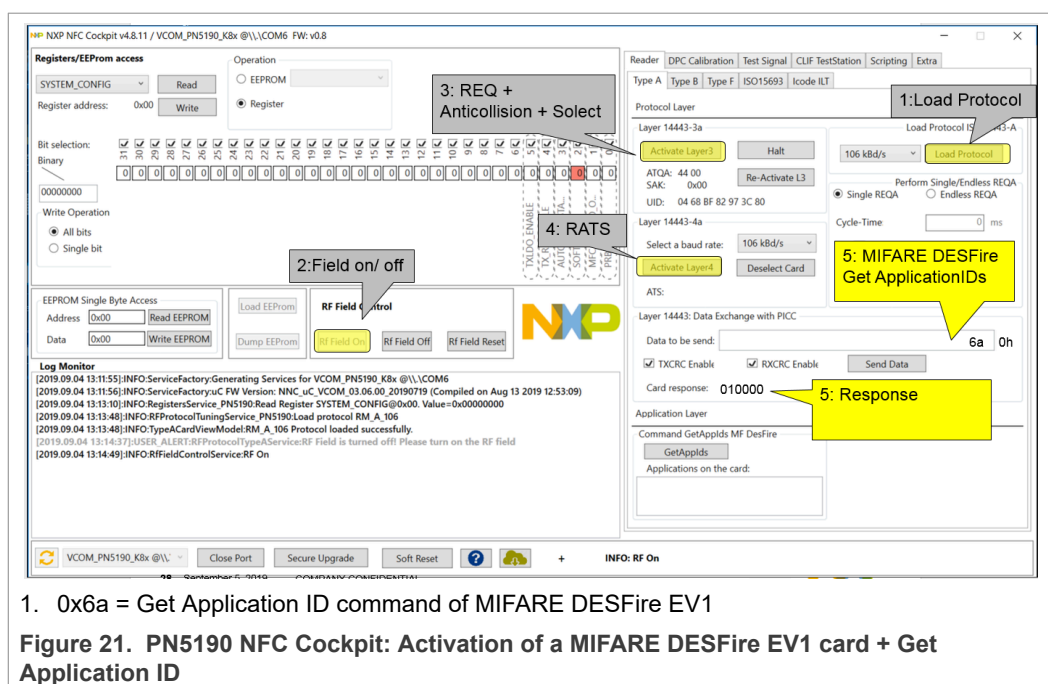
Example: Without enabling the field, no card can be operated, even though the PN5190 can be operated.

Figure 21 shows the activation of a MIFARE DESFire card, using the <Load Protocol> + <Field On> + <Activate Layer3>, followed by <Activate Layer4>. The PN5190 NFC Cockpit shows the card responses like ATQA, SAK, and ATS.

Afterwards the ISO/IEC 14443-4 protocol can be used to exchange data. Figure 21 shows the MIFARE DESFire command “Get Application ID” (0x6A), which returns the AIDs.

Note:

Make sure that either the CRC is enabled or added manually in the data field.



Similar functionality does exist for ISO/IEC 14443 A and B, for NFC type F and for ISO/IEC 15693 communication.

Be aware that a LOAD_RF_CONFIG command must be executed manually before the corresponding protocol settings are loaded from the EEPROM into the registers. This can be used to perform:

1. <Load Protocol> (e.g. type A 106)
2. <Field On>
3. <Single REQA> (using the EEPROM settings)
4. Select a TX register, e.g. RF_CONTROL_TX, enable TX_SET_BYPASS_SC_SHAPING
5. Change some register bits, and write back into RAM
6. <Single REQA> shows the register changes (probing the field and checking the envelope)

This allows an easy and quick optimization of TX and RX parameters before changing the EEPROM.

1. <Load Protocol> (e.g. type A 106)
2. <Single REQA> (using again the EEPROM settings)

5.2.1 PN5190 register access

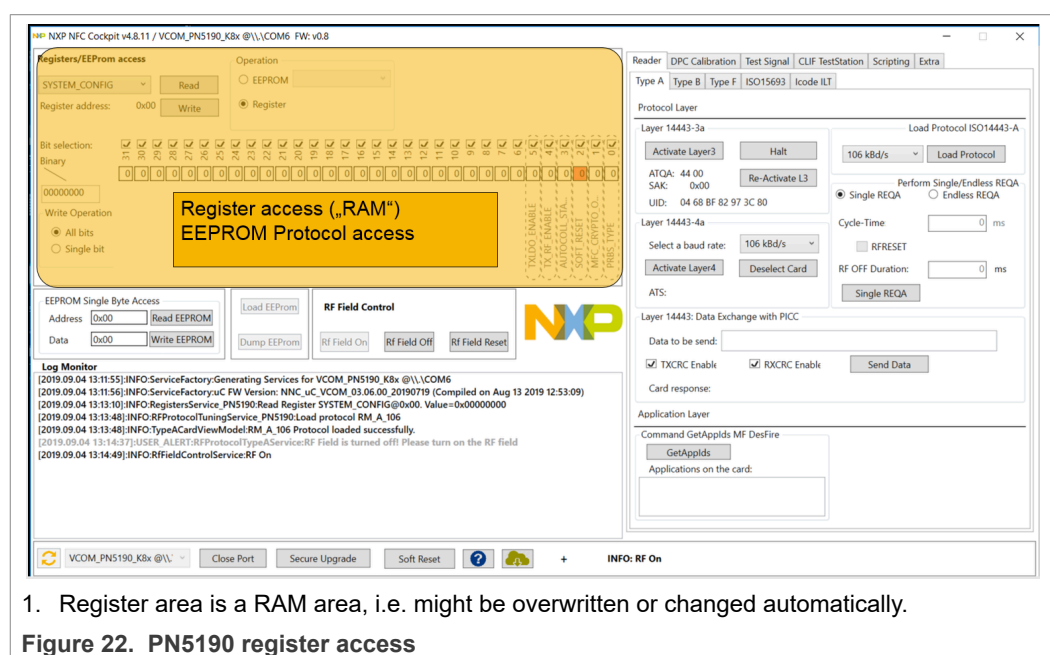
The PN5190 NFC Cockpit allows the reading and writing of all the PN5190 registers (see [Figure 22](#)).

Selecting a register reads and shows the hexadecimal content as well as the corresponding bit values. The input allows changing each bit separately as well as writing hexadecimal values. Writing back the value changes the PN5190 register.

A help function automatically shows a short description of the (part of the) registers itself, if the mouse is moved over the names.

Note:

Some register content cannot be changed manually ("read only") and some content might be overwritten by the PN5190 firmware.



1. Register area is a RAM area, i.e. might be overwritten or changed automatically.

Figure 22. PN5190 register access

All registers, which are used in the LOAD_RF_CONFIG command, can be read from the EEPROM. The user must select the register and the protocol.

All registers, which are used in the LOAD_RF_CONFIG command, can be written into the EEPROM. The user must select the register and the protocol.

This allows an easy EEPROM update of the relevant TX and RX registers after optimization in RAM.

5.2.2 PN5190 direct EEPROM access

The NFC Cockpit allows 4 options of EEPROM access (see [Figure 23](#)):

- Read EEPROM

Reads a single byte from EEPROM using byte address

- Write EEPROM

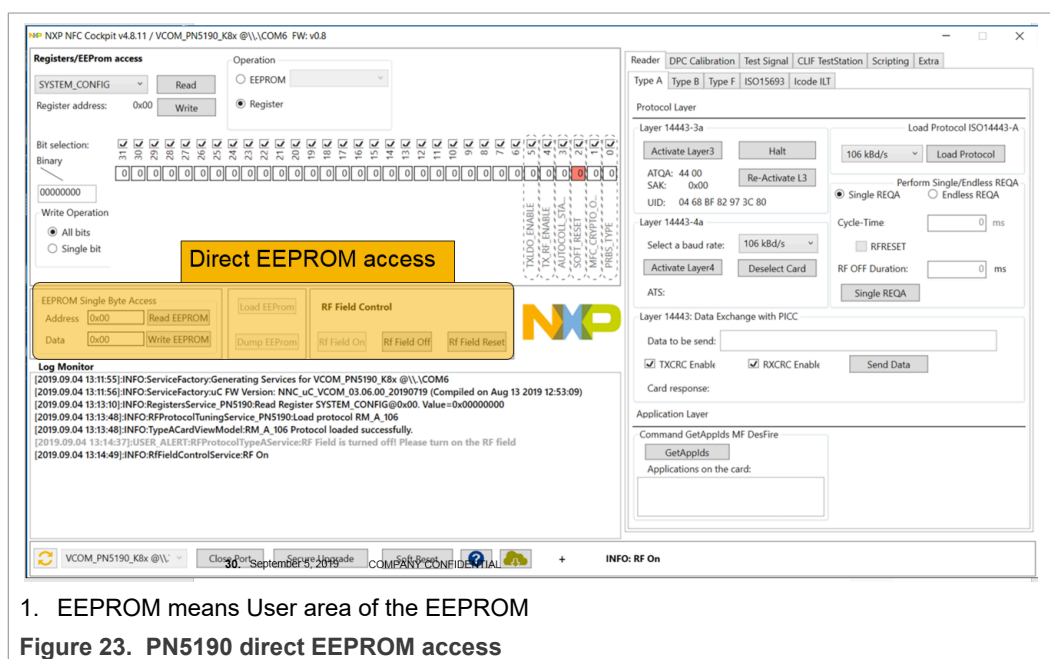
Writes a single byte into EEPROM using byte address

- Dump EEPROM

Stores the complete user area of the PN5190 EEPROM into an XML file. This can be used to generate a backup of all settings or to transfer optimized settings onto another board or into own software. It makes sense to save all default EEPROM settings into a file, before modifying the EEPROM.

- Load EEPROM

Loads an XML file and stores the content into the user area of the PN5190 EEPROM. The format is fixed and must fit.



1. EEPROM means User area of the EEPROM

5.2.3 PN5190 analog and digital test signals

The NFC cockpit allows using the PN5190 internal test bus, to route the digital and analog test signals to the given test pins. Details can be found in the CTS description.

The test pins can be found at TB0, TB1 and TB2.

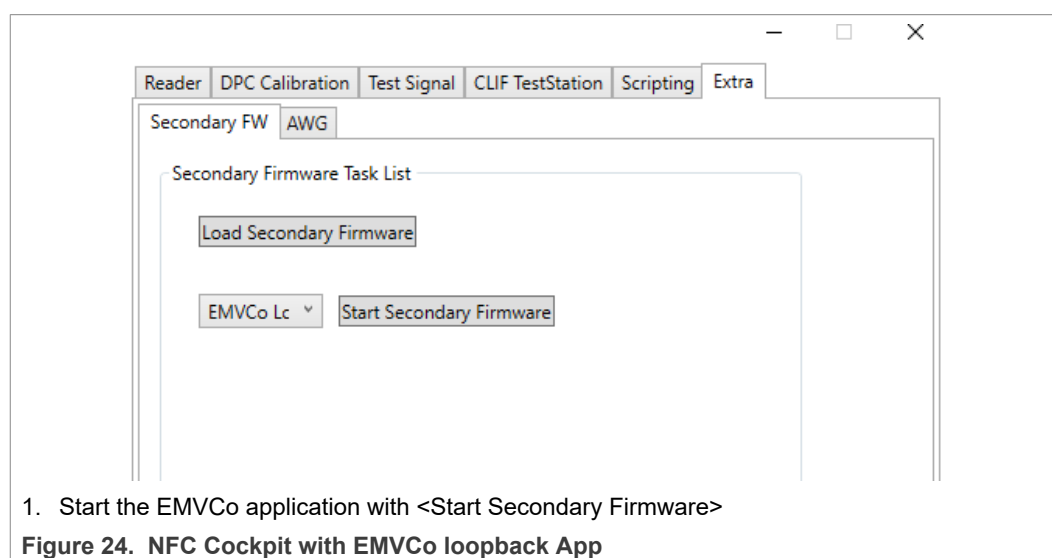
5.2.4 PN5190 dynamic power control

The NFC Cockpit supports an easy and straight forward calibration of the DPC. All details can be found in [2].

5.2.5 EMVCo loopback application

The NFC Cockpit offers the option to start applications on the K82 firmware. The default application, as provided with the standard K82 firmware, allows running an EMVCo Loopback function.

The EMVCo Loopback can be started by selecting the < EMVCo Loop Back (digital)> and then pressing the <Start Secondary Firmware> button (see [Figure 24](#)). The function runs on the PNEV5190B independently from the PC, but can be stopped by pressing the <Stop Secondary Firmware> button.



5.3 NFC Reader Library support of the PN5190

NXP provides a library to support users in developing an NFC application. The library is available in the PN5190 SW release package.

NXP NFC Reader Library is written in C language, and it is shared as source code. Therefore it can be ported to almost any μ C.

5.3.1 Import library and demo application to the MCUXpresso IDE

This chapter explains how to use the MCUXpresso IDE tool to build the NFC Reader Library demo applications.

As a first step, extract the zipped library package ("NxpNfcRdLib_06.03.00_20200512.zip", or higher) to an empty folder and follow steps described below.

1. Open MCUXpresso IDE
The “MCUXpresso IDE Launcher” dialog box appears and prompts to select a workspace to use. It is recommended to use an empty folder as a new workspace.

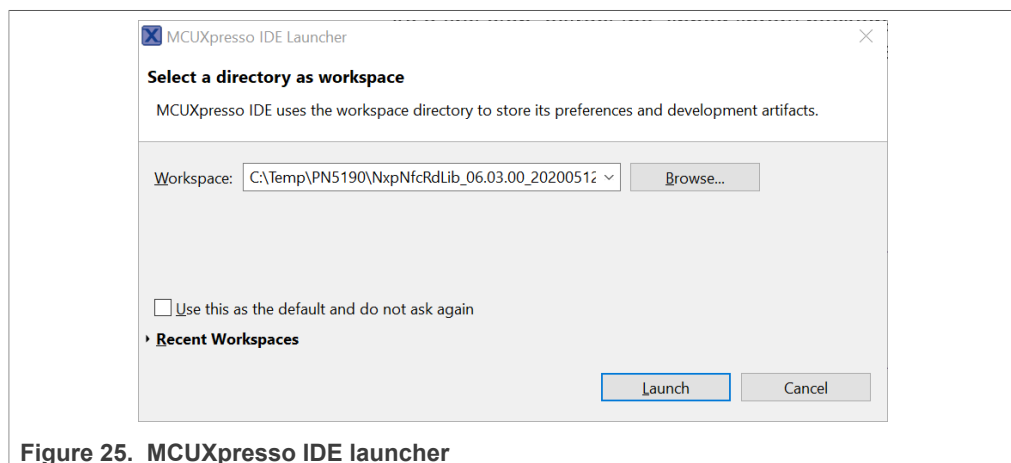


Figure 25. MCUXpresso IDE launcher

- The IDE starts and displays the welcome page.
2. Import NFC Reader Library and demo applications
Select “Import projects...” from the “Project Explorer” window.

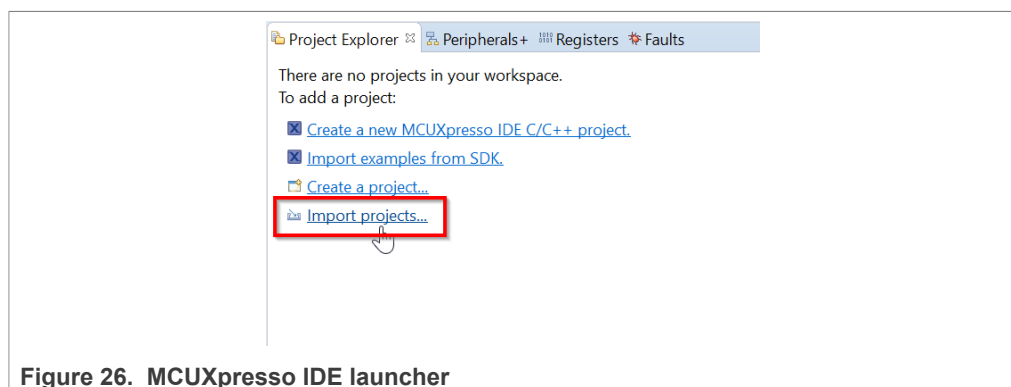


Figure 26. MCUXpresso IDE launcher

3. Import wizard appears
Select “General/Existing Projects into Workspace” and click “Next” button.

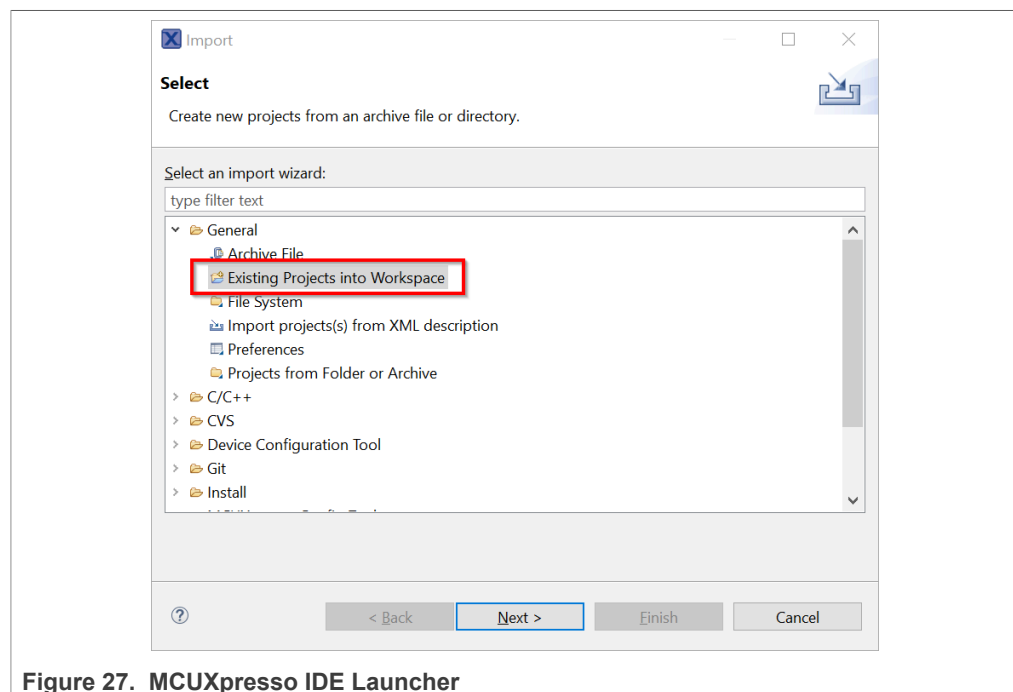
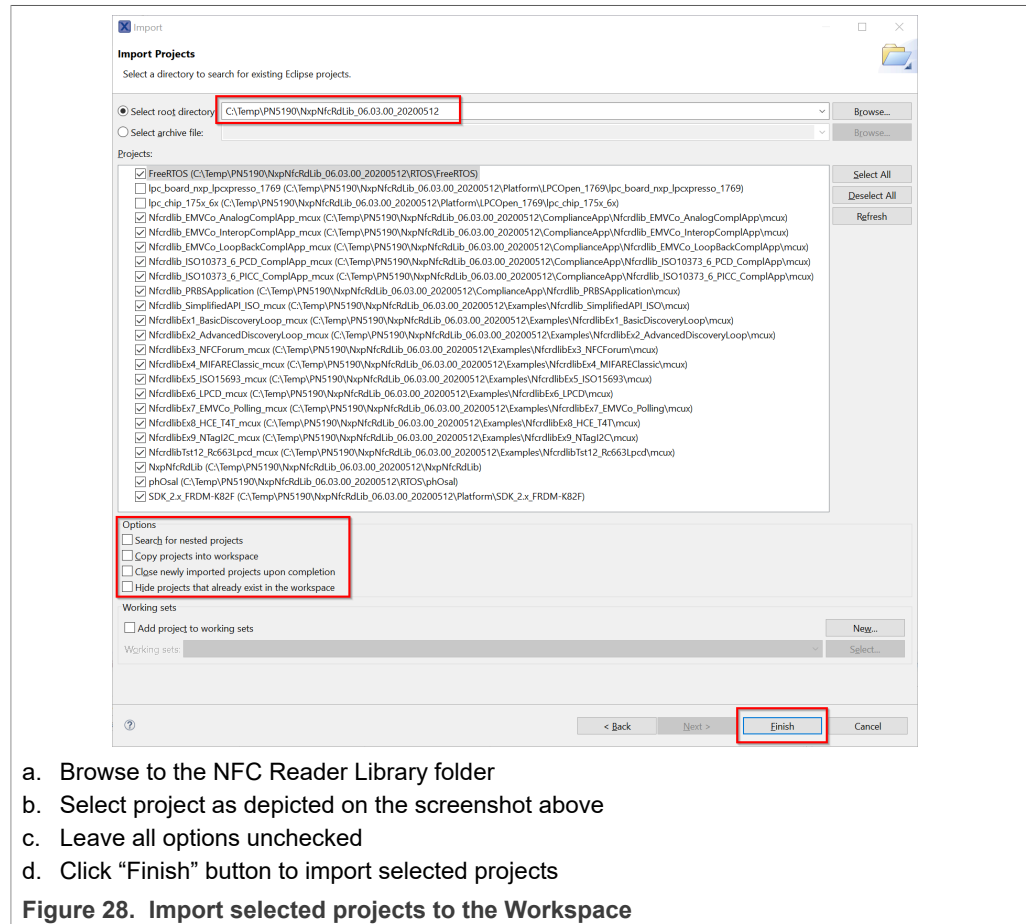
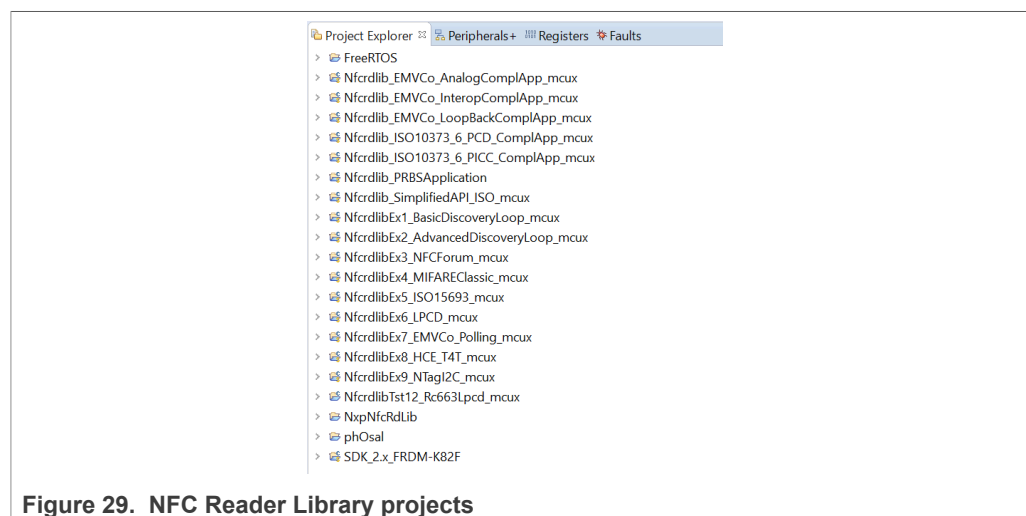


Figure 27. MCUXpresso IDE Launcher

4. Select the projects root folder
Browse to the unzipped folder with the NFC Reader Library



5. All imported projects shall be listed in the “Project Explorer” window



5.3.2 Install FRDM-K82F SDK

It is mandatory to install K82F SDK to build, run or debug projects. The SDK is available and shall be downloaded from the NXP website.

1. Left-click at Installed SDKs view. Pop-up menu appears

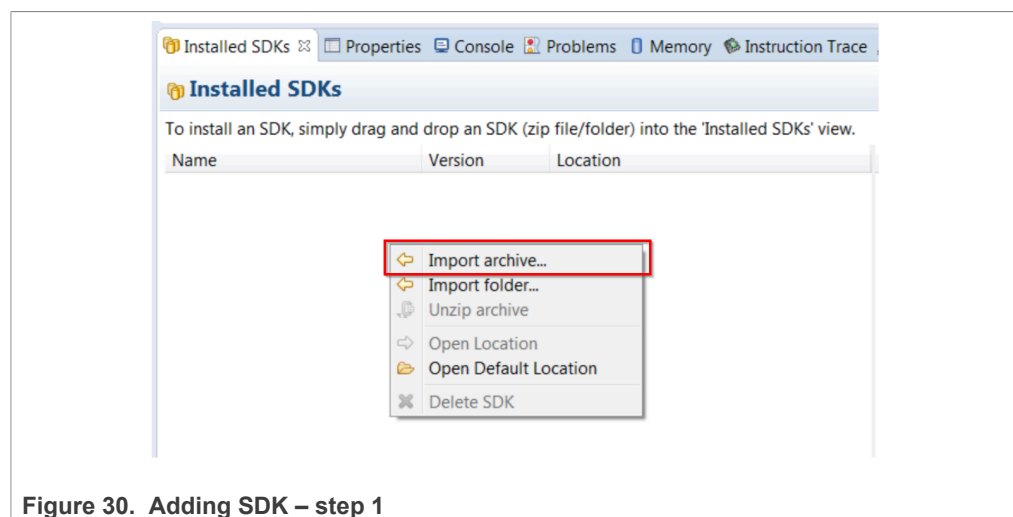


Figure 30. Adding SDK – step 1

2. Right-click “Import archive” and browse to the K82F SDK zip file. Import process starts automatically

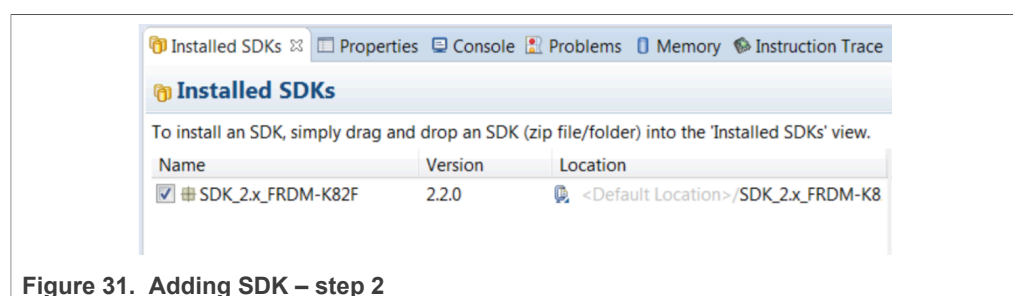


Figure 31. Adding SDK – step 2

5.3.3 Build, debug and run projects

Provided NFC Reader Library project and demo application projects are pre-configured to be used with the PNEV5190B v1.0 customer demo board.

As a next step, all projects shall be built. Select the “Build all projects” in the “Quickstart Panel” window.

Alternatively, select “Project > Build” to build only one project at the time.

6 References

- [1] PN5190 NFC frontend, Product data sheet, <https://www.nxp.com/docs/en/data-sheet/PN5190.pdf>
- [2] AN12549 PN5190 antenna design guide, <https://www.nxp.com/docs/en/application-note/AN12549.pdf>
- [3] ANxxx PN5190 dynamic power control (not yet available)
- [4] UMxxx PN5190 software quick start guide (not yet available)
- [5] PNEV5190 reference data package (schematics and layout)

7 Legal information

7.1 Definitions

Draft — A draft status on a document indicates that the content is still under internal review and subject to formal approval, which may result in modifications or additions. NXP Semiconductors does not give any representations or warranties as to the accuracy or completeness of information included in a draft version of a document and shall have no liability for the consequences of use of such information.

7.2 Disclaimers

Limited warranty and liability — Information in this document is believed to be accurate and reliable. However, NXP Semiconductors does not give any representations or warranties, expressed or implied, as to the accuracy or completeness of such information and shall have no liability for the consequences of use of such information. NXP Semiconductors takes no responsibility for the content in this document if provided by an information source outside of NXP Semiconductors. In no event shall NXP Semiconductors be liable for any indirect, incidental, punitive, special or consequential damages (including - without limitation - lost profits, lost savings, business interruption, costs related to the removal or replacement of any products or rework charges) whether or not such damages are based on tort (including negligence), warranty, breach of contract or any other legal theory. Notwithstanding any damages that customer might incur for any reason whatsoever, NXP Semiconductors' aggregate and cumulative liability towards customer for the products described herein shall be limited in accordance with the Terms and conditions of commercial sale of NXP Semiconductors.

Right to make changes — NXP Semiconductors reserves the right to make changes to information published in this document, including without limitation specifications and product descriptions, at any time and without notice. This document supersedes and replaces all information supplied prior to the publication hereof.

Suitability for use — NXP Semiconductors products are not designed, authorized or warranted to be suitable for use in life support, life-critical or safety-critical systems or equipment, nor in applications where failure or malfunction of an NXP Semiconductors product can reasonably be expected to result in personal injury, death or severe property or environmental damage. NXP Semiconductors and its suppliers accept no liability for inclusion and/or use of NXP Semiconductors products in such equipment or applications and therefore such inclusion and/or use is at the customer's own risk.

Applications — Applications that are described herein for any of these products are for illustrative purposes only. NXP Semiconductors makes no representation or warranty that such applications will be suitable for the specified use without further testing or modification. Customers are responsible for the design and operation of their applications and products using NXP Semiconductors products, and NXP Semiconductors accepts no liability for any assistance with applications or customer product design. It is customer's sole responsibility to determine whether the NXP Semiconductors product is suitable and fit for the customer's applications and products planned, as well as for the planned application and use of customer's third party customer(s). Customers should provide appropriate design and operating safeguards to minimize the risks associated with their applications and products. NXP Semiconductors does not accept any liability related to any default, damage, costs or problem which is based on any weakness or default in the customer's applications or products, or the application or use by customer's third party customer(s). Customer is responsible for doing all necessary testing for the customer's applications and products using NXP Semiconductors products in order to avoid a default of the applications and the products or of the application or use by customer's third party customer(s). NXP does not accept any liability in this respect.

Export control — This document as well as the item(s) described herein may be subject to export control regulations. Export might require a prior authorization from competent authorities.

Evaluation products — This product is provided on an "as is" and "with all faults" basis for evaluation purposes only. NXP Semiconductors, its affiliates and their suppliers expressly disclaim all warranties, whether express, implied or statutory, including but not limited to the implied warranties of non-infringement, merchantability and fitness for a particular purpose. The entire risk as to the quality, or arising out of the use or performance, of this product remains with customer. In no event shall NXP Semiconductors, its affiliates or their suppliers be liable to customer for any special, indirect, consequential, punitive or incidental damages (including without limitation damages for loss of business, business interruption, loss of use, loss of data or information, and the like) arising out of the use of or inability to use the product, whether or not based on tort (including negligence), strict liability, breach of contract, breach of warranty or any other theory, even if advised of the possibility of such damages. Notwithstanding any damages that customer might incur for any reason whatsoever (including without limitation, all damages referenced above and all direct or general damages), the entire liability of NXP Semiconductors, its affiliates and their suppliers and customer's exclusive remedy for all of the foregoing shall be limited to actual damages incurred by customer based on reasonable reliance up to the greater of the amount actually paid by customer for the product or five dollars (US\$5.00). The foregoing limitations, exclusions and disclaimers shall apply to the maximum extent permitted by applicable law, even if any remedy fails of its essential purpose.

Translations — A non-English (translated) version of a document is for reference only. The English version shall prevail in case of any discrepancy between the translated and English versions.

Security — Customer understands that all NXP products may be subject to unidentified or documented vulnerabilities. Customer is responsible for the design and operation of its applications and products throughout their lifecycles to reduce the effect of these vulnerabilities on customer's applications and products. Customer's responsibility also extends to other open and/or proprietary technologies supported by NXP products for use in customer's applications. NXP accepts no liability for any vulnerability. Customer should regularly check security updates from NXP and follow up appropriately. Customer shall select products with security features that best meet rules, regulations, and standards of the intended application and make the ultimate design decisions regarding its products and is solely responsible for compliance with all legal, regulatory, and security related requirements concerning its products, regardless of any information or support that may be provided by NXP. NXP has a Product Security Incident Response Team (PSIRT) (reachable at PSIRT@nxp.com) that manages the investigation, reporting, and solution release to security vulnerabilities of NXP products.

7.3 Licenses

Purchase of NXP ICs with NFC technology

Purchase of an NXP Semiconductors IC that complies with one of the Near Field Communication (NFC) standards ISO/IEC 18092 and ISO/IEC 21481 does not convey an implied license under any patent right infringed by implementation of any of those standards. Purchase of NXP Semiconductors IC does not include a license to any NXP patent (or other IP right) covering combinations of those products with other products, whether hardware or software.

7.4 Trademarks

Notice: All referenced brands, product names, service names and trademarks are the property of their respective owners.

MIFARE — is a trademark of NXP B.V.

DESFire — is a trademark of NXP B.V.

Kinetis — is a trademark of NXP B.V.

NXP — wordmark and logo are trademarks of NXP B.V.

Tables

Tab. 1.	PNEV5190M module supply pins	11	Tab. 3.	API provided by secure download library	22
Tab. 2.	Development Environment	18			

Figures

Fig. 1.	PNEV5190B Customer evaluation board	6	Fig. 16.	Import secure firmware project to the	
Fig. 2.	PNEV5190B base board top view		MCUXpresso IDE	20	
	(placement)	7	Fig. 17.	Project Explorer Window	20
Fig. 3.	PNEV5190M Module board top view		Fig. 18.	Flash and debug application	21
	(placement)	7	Fig. 19.	Application debug printouts	21
Fig. 4.	K82 main schematics	8	Fig. 20.	NFC Cockpit with PNEV5190B initial view	23
Fig. 5.	PNEV5190M interface	9	Fig. 21.	PN5190 NFC Cockpit: Activation of a	
Fig. 6.	OpenSDA for K82 (MK20DX128VFM5)	10	MIFARE DESFire EV1 card + Get		
Fig. 7.	Figure title here	11	Application ID	24	
Fig. 8.	PBEV5190B jumpers	12	Fig. 22.	PN5190 register access	25
Fig. 9.	PNEV5190M module board schematics	13	Fig. 23.	PN5190 direct EEPROM access	26
Fig. 10.	PNEV5190B antenna circuit	14	Fig. 24.	NFC Cockpit with EMVCo loopback App	27
Fig. 11.	PNEV5190B evaluation board antenna		Fig. 25.	MCUXpresso IDE launcher	28
tuning	14	Fig. 26.	MCUXpresso IDE launcher	28	
Fig. 12.	PNEV5190 customer evaluation board		Fig. 27.	MCUXpresso IDE Launcher	29
jumper	15	Fig. 28.	Import selected projects to the Workspace	30	
Fig. 13.	PNEV5190 firmware block diagram	17	Fig. 29.	NFC Reader Library projects	30
Fig. 14.	System setup	18	Fig. 30.	Adding SDK – step 1	31
Fig. 15.	Import Secure Firmware Project to the		Fig. 31.	Adding SDK – step 2	31
MCUXpresso IDE	19				

Contents

1	Revision history	2
2	Introduction	3
2.1	PN5190 registers and EEPROM concept	3
2.2	PNEV5190B concept	3
3	Hardware	5
3.1	Hardware introduction	5
3.2	Schematics	7
3.2.1	K82	7
3.2.2	Power supply	10
3.2.3	PNEV5190M module board	12
3.2.4	PNEV5190 antenna	13
3.3	K20 OpenSDA interface	15
3.4	LED status indication	15
3.5	Jumper settings	15
3.5.1	USB only	15
3.5.2	External power supply	15
3.5.3	First-time use	15
4	PN5190 secure firmware update	16
4.1	Requirements	16
4.1.1	System requirements	16
4.1.2	Hardware requirements	16
4.2	Block diagram overview	16
4.2.1	PC host	17
4.2.2	Microcontroller host	17
4.2.3	PN5190	17
4.3	Reference application	17
4.3.1	Preconditions	18
4.3.2	Import reference project	18
4.3.3	Build, run and debug project	19
4.3.4	Secure download library	21
5	Software	23
5.1	K82 firmware and driver	23
5.2	PN5190 NFC Cockpit	23
5.2.1	PN5190 register access	25
5.2.2	PN5190 direct EEPROM access	25
5.2.3	PN5190 analog and digital test signals	26
5.2.4	PN5190 dynamic power control	26
5.2.5	EMVCo loopback application	27
5.3	NFC Reader Library support of the PN5190	27
5.3.1	Import library and demo application to the MCUXpresso IDE	27
5.3.2	Install FRDM-K82F SDK	31
5.3.3	Build, debug and run projects	31
6	References	32
7	Legal information	33

Please be aware that important notices concerning this document and the product(s) described herein, have been included in section 'Legal information'.

© NXP B.V. 2021.

All rights reserved.

For more information, please visit: <http://www.nxp.com>

For sales office addresses, please send an email to: salesaddresses@nxp.com

Date of release: 23 April 2021

Document identifier: AN12550

Document number: 562315