



MPA-254-WIFI

WIFI 2.4/5 GHz Embedded Patch Antenna

Part #: 189-00055-01

Description

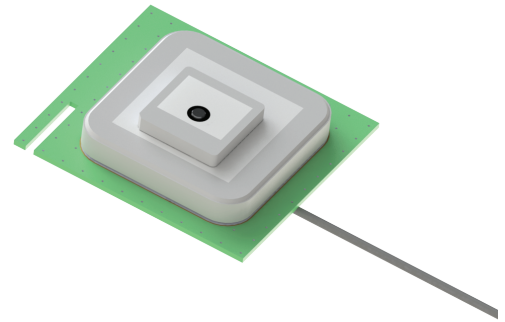
The MPA-254-WIFI is a high gain antenna customized for both 2.4 GHz & 5.8 GHz frequencies. The antenna features an optimized WIFI ceramic stacked patch with customizable cable and connectors. The MPA-254-WIFI has its own ground PCB board, and thus it is ground plane dependent. This antenna is designed for embedded applications which feature high performance WIFI such mobile applications and IOT solutions. The MPA-254-WIFI utilizes a special semi ceramic based material which leads to higher upper hemisphere efficiency and a lower axial ratio as compared to regular patch antennas. This allows the antenna to be superior and a top choice for demanding WIFI multiband/multifrequency antenna requirements.

Electrical Specifications

Parameter	Specification	
Range Of Receiving Frequency	2400-2500 MHz	5700-5870MHz
Center Frequency	2450MHz	5800 MHz
Return Loss	≤ -9 dB	≤ -7 dB
Gain at Zenith	1.0 dBi typ.	1.0 dBi typ.
Polarization	Linear	
Impedance	50 Ω	

Mechanical Specification

Parameter	Specification
Antenna Dimensions	25 x 25 x 4 mm
Operating Temperature	-40°C to 105°C
Connector	I-PEX (U.FL)
Cable Type	Ø1.13 mm COAXIAL
Cable Length	150 mm



Features

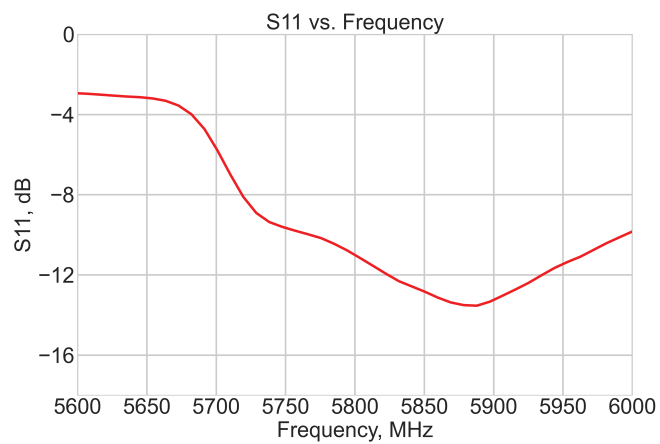
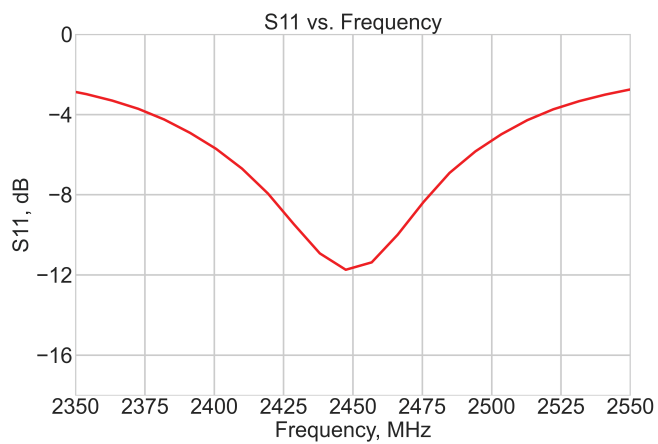
- 2.4GHz & 5.8 GHz Wi-Fi frequency
- Integrated Ground plane with cable
- Easy mounting
- Surface Mount
- Compact size
- Advanced Ceramic Material
- Terminator using IPEX connector

Applications

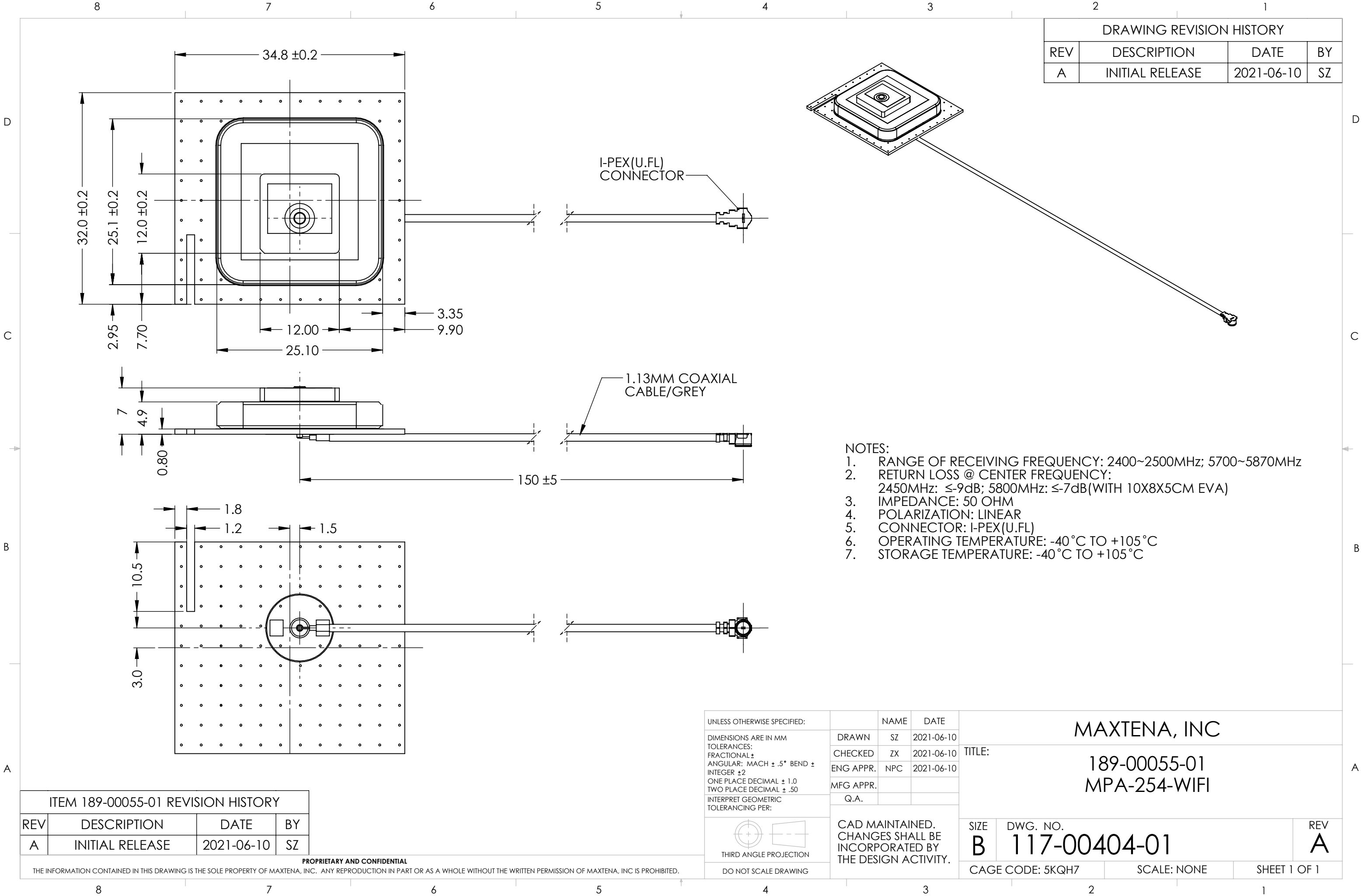
- WiFi Applications
- Mobile applications
- Drones, robotics
- IoT applications
- VR/AR applications
- Industrial controls



Maxtena Inc.
7361 Calhoun Place, Suite 102
Rockville, MD 20855
1-877-629-8362
info@maxtena.com
www.maxtena.com



Maxtena Inc.
7361 Calhoun Place, Suite 102
Rockville, MD 20855
1-877-629-8362
info@maxtena.com
www.maxtena.com



Mouser Electronics

Authorized Distributor

Click to View Pricing, Inventory, Delivery & Lifecycle Information:

Maxtena:

[MPA-254-WIFI](#)