



MEA-915-SW-SMA

915 MHz ISM Screw Mount

Part #: 100-00182-01

Description

The MEA-915-SW-SMA is a high efficient screw-mount ISM band antenna operating at 915MHz, with a very high-performance ideal for maintaining constant network connectivity. This antenna was designed for LoRa & Sigfox IOT applications in mind. This is an ideal antenna for telematics systems, remote surveillance, asset tracking and any IOT system applications. The high performance and low profile make this antenna ideal for the most challenging installations. This screw mount antenna is easy to install with maximum durability offering IP67 rated housing and anti-rotation mounting.

Electrical Specifications

Parameter	Specification
Frequency Range	902-928 MHz
Band	915 MHz
Return Loss	-16.1 dB
VSWR	1.4:1
Efficiency	55.1%
Peak Gain	4.0 dBi
Average Gain	-2.6 dB
Impedance	50 Ω
Polarisation	Linear
Radiation Pattern	Omni-Directional
Max. Input Power	25 W

Mechanical Specification

Parameter	Specification
Antenna Dimensions	80 x 74 x 25.6 mm
Operating Temperature	-40°C to 85°C
Connector Type	SMA-Male Standard
Mounting Type	Screw Mount
Random	ABS UV Stable
Radome color	Black
Substance Compliance	RoHS
Certificates	IP67, IP69

*Mounted on Ground Plane of 30 x 30 cm



Features

- 915 MHz ISM - 902-928 MHz
- LoRa/ Sigfox/ NB-IOT
- Screw Mount
- Anti-Rotation Mechanism
- Ground Plane Independent
- Customizable Cable and Connector
- Low Profile Dimensions 80 x 74 x 25.6 mm
- IP67, IP69

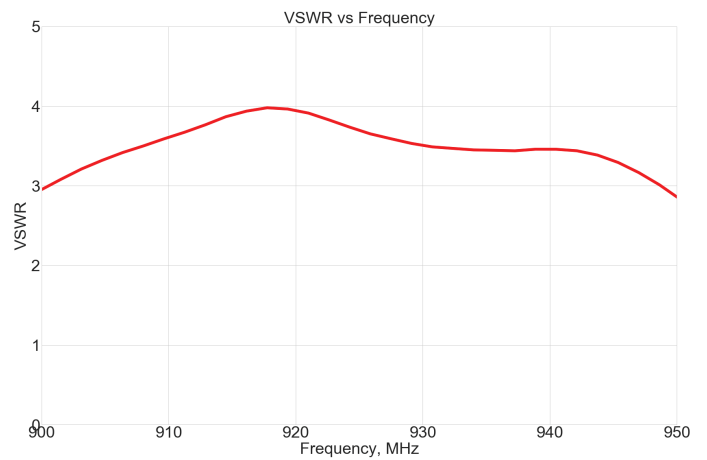
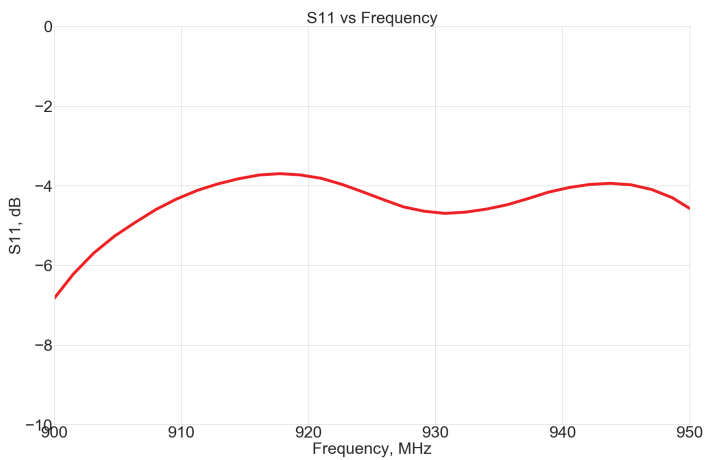
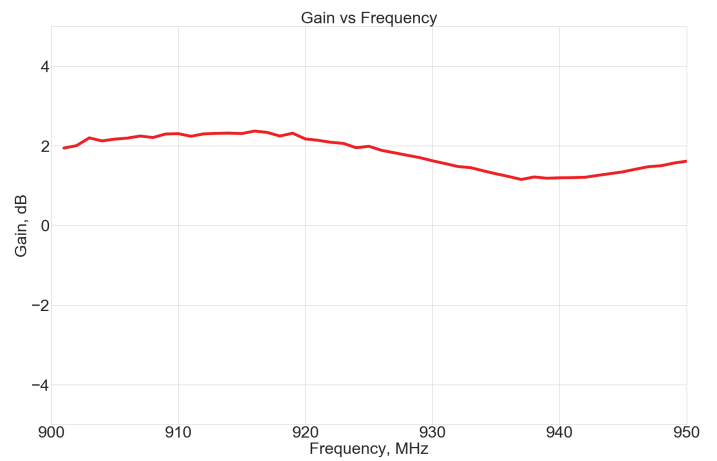
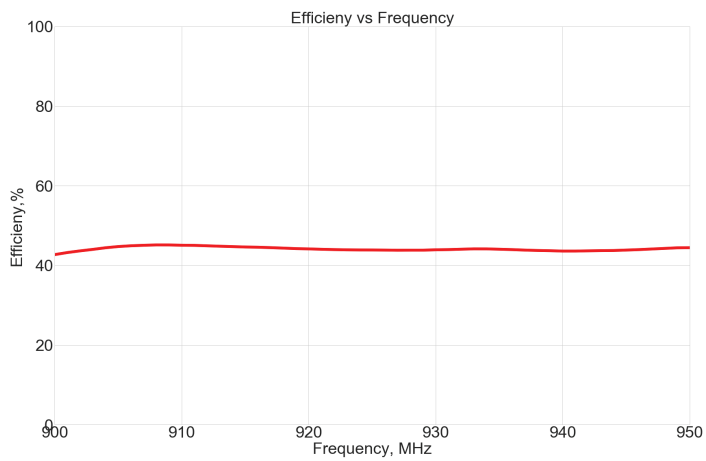
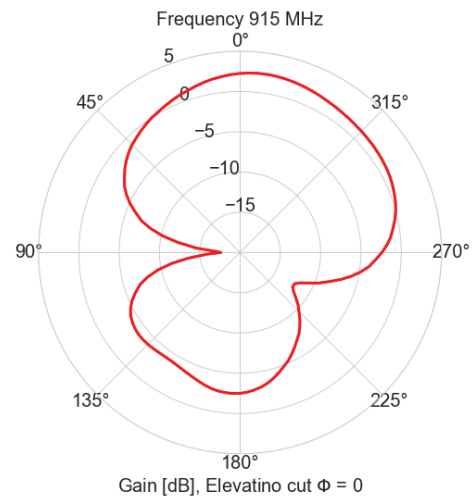
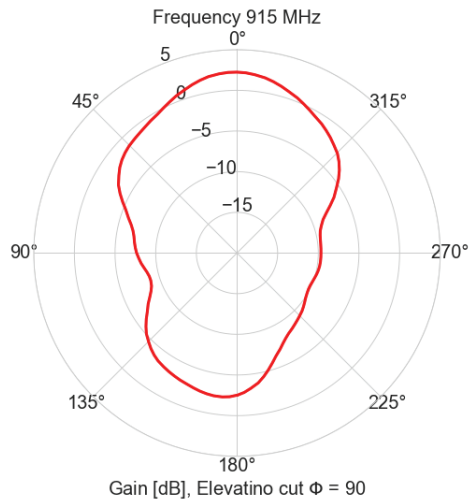
Applications

- Remote mesh networks
- Smart meters
- IOT
- Public Safety



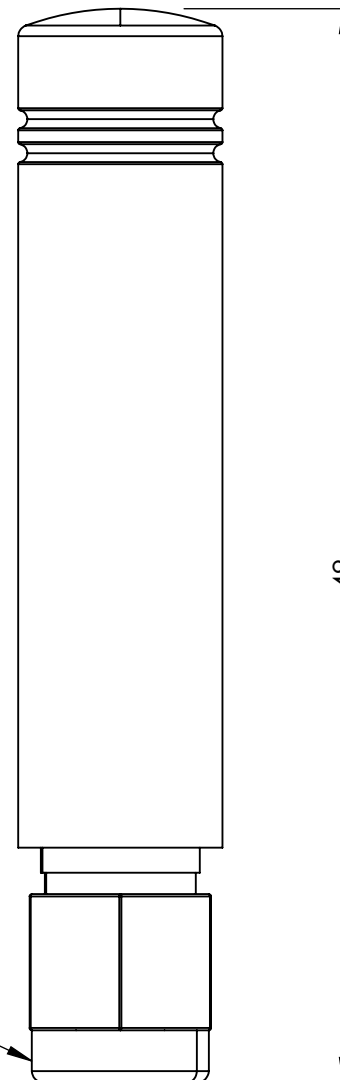
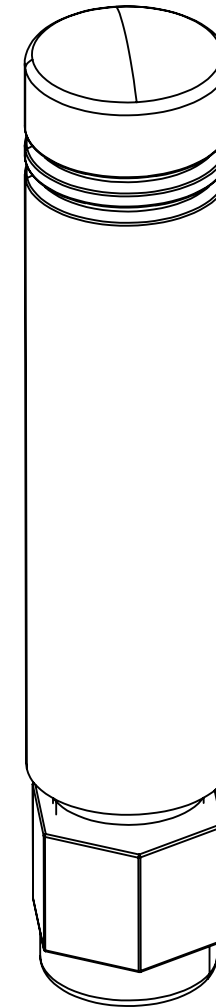
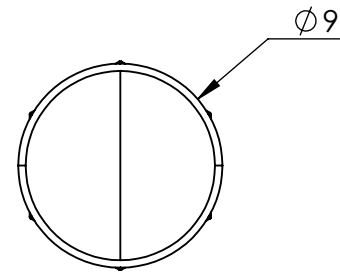
Maxtena Inc.
7361 Calhoun Place, Suite 102
Rockville, MD 20855
1-877-629-8362
info@maxtena.com

www.maxtena.com



1. FREQUENCY: 902-928 MHz
2. MOUNTING TYPE: CONNECTOR MOUNT
3. RADOME TYPE: TPC-ET
4. RADOME COLOR: BLACK
5. CONNECTOR TYPE: SMA-MALE STANDARD
6. OPERATING TEMPERATURE: -40°C ~ 85°C
7. STORAGE TEMPERATURE: -40°C ~ 85°C
8. SUBSTANCE COMPLIANCE: RoHS

REV	DESCRIPTION	DATE	BY
A	INITIAL RELEASE	2021-06-24	SZ




SMA-MALE CONNECTOR

ITEM 100-00182-01 REVISION HISTORY			
REV	DESCRIPTION	DATE	BY
1	INITIAL RELEASE	2021-06-24	SZ

PROPRIETARY AND CONFIDENTIAL

THE INFORMATION CONTAINED IN THIS DRAWING IS THE SOLE PROPERTY OF MAXTENA, INC. ANY REPRODUCTION IN PART OR AS A WHOLE WITHOUT THE WRITTEN PERMISSION OF MAXTENA, INC IS PROHIBITED.

UNLESS OTHERWISE SPECIFIED:		NAME		DATE		MAXTENA, INC					
DIMENSIONS ARE IN MM		DRAWN	SZ	2021-06-24		TITLE: 100-00182-01 MEA-915-SW-SMA					
TOLERANCES:		CHECKED	ZX	2021-06-24							
FRACTIONAL ±		ENG APPR.	NPC	2021-06-24							
ANGULAR: MACH ± .5° BEND ±		MFG APPR.									
ONE PLACE DECIMAL ± 1.0											
TWO PLACE DECIMAL ± 0.5											
INTERPRET GEOMETRIC		Q.A.									
TOLERANCING PER:		CAD MAINTAINED. CHANGES SHALL BE INCORPORATED BY THE DESIGN ACTIVITY.									
											
THIRD ANGLE PROJECTION											
DO NOT SCALE DRAWING						SIZE	DWG. NO.			REV	
						B	117-00473-01			A	
				CAGE CODE: 5KQH7			SCALE: NONE			SHEET 1 OF 1	

Mouser Electronics

Authorized Distributor

Click to View Pricing, Inventory, Delivery & Lifecycle Information:

Maxtena:

[MEA-915-SW-SMA](#)