

Features

- 1 **Low-profile design with high current power supply capability**
 - Rated current: **5A** for power contact,
0.3A for signal contact
 - **0.6mm** stacking height, **1.9mm** width
- 2 **Full armored design prevents housing damage**
- 3 **Easy mating operation with wide self alignment range**
- 4 **Integrally molded header and receptacle design**
 - **Solder Wicking Prevention**
- 5 **Improved PCB peeling strength by multi-point soldering**



P= 0.35mm



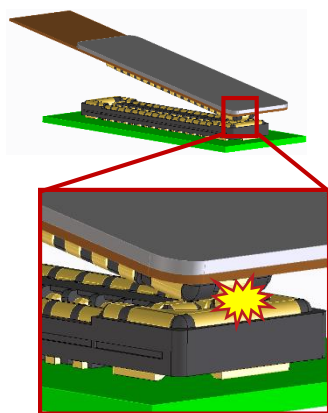
Robust



High-Current

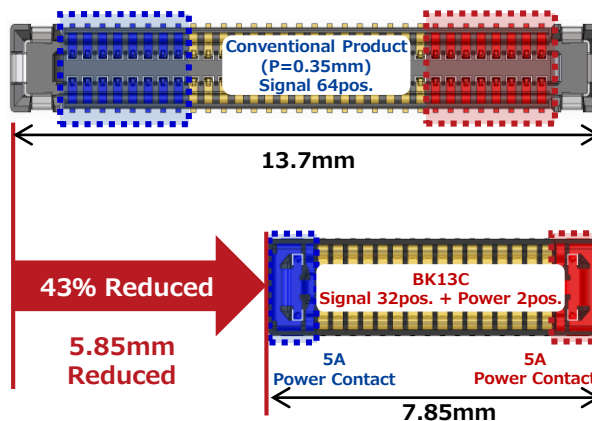
Robust Design

Full armored design prevents housing damage



High Current (5A)

Power contact saves space



Specifications

Rated Current	Power Contact: 5A Signal Contact: 0.3A
Rated Voltage	30V AC/DC
Operating Temperature	-55 to +85 °C*
Contact Resistance	Power Contact: 30mΩ Max. Signal Contact: 90mΩ Max.
Withstanding Voltage	100V AC for 1 min.
Insulation Resistance	50MΩ Min. (100V DC)
Mating Durability	10 times

*Includes the temperature rise by current flow.
- Variations: 32, 40pos.