

# FLO+ K Series

Boost Your Productivity, Increase Your Profit



## Benefits

- + Increase Over 50% of Cable Assembly Outputs  
In Over 50% Less Time
- + Eliminate Epoxy and Glue Production Process  
and Fallouts To Achieve IP68
- + Fewer Parts To Manage And Stock
- + More Productivities And Fewer Manpower



UL 94V-0



RoHS



Corrosion  
Resistant



360°  
Shielded



Quick  
Installation



Harsh  
Environment



IP68  
(1.5M/24hrs)

## Applications



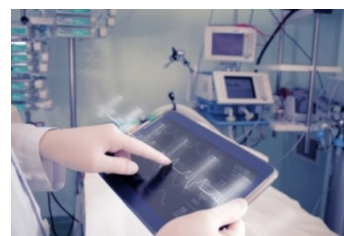
Military



HD Video Cameras



Testing &  
Measurement Equipment



Non-Invasive Medical  
Electronic Equipment

## Specifications

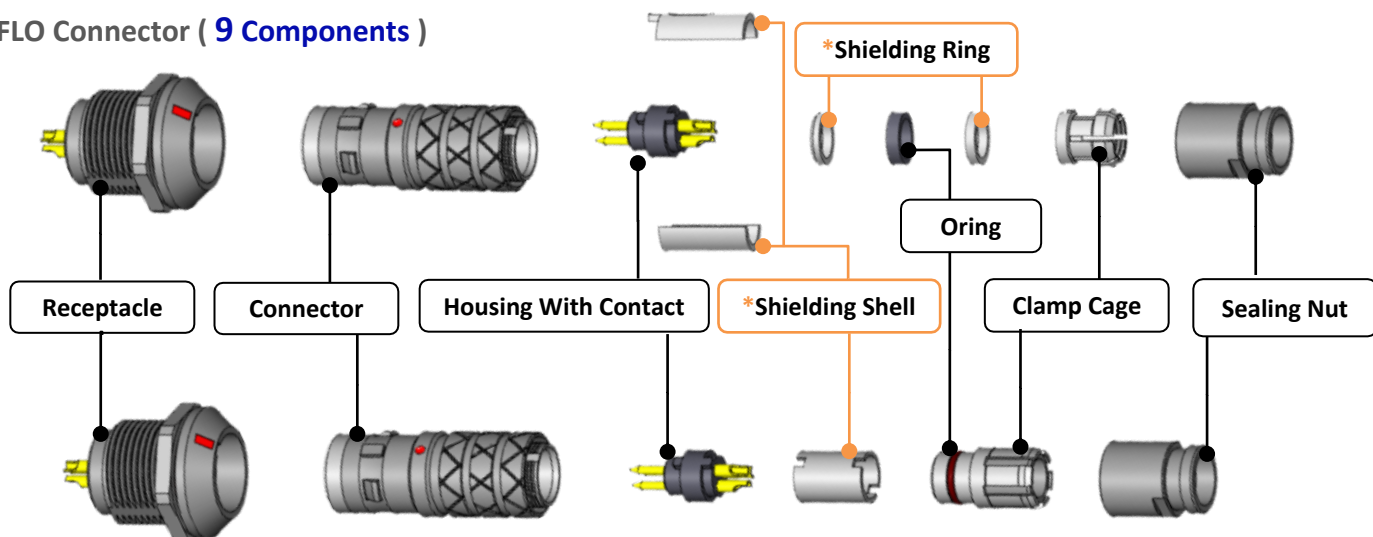
### General Characteristics

Current Rating	1.5A~25A	Waterproof Rating	IP68 Receptacle (Unmated) IP68 Field Installable (Mated)
Pin	2~19	Mating Style	Push-pull Mechanism
Voltage Rating	160V~600V	Contact Resistant	21mΩ maximum
Durability	5,000 cycles	Salt Spray	72hr
Temperature Range	Receptacle / Field Installable: -40°C ~ +125°C Overmolded Cable: -20°C ~ 80°C	Mating force	14N max
		Unmating Force	9N min

\*Overmolded cable available upon request

## Comparison


### FLO Connector ( 9 Components )



### FLO+ Connector ( 6 Components )

- \* Shielding Shell: Combine into 1 component
- \* Shielding Ring: Removed

## Key features

Characteristics	FLO+ Connector 	FLO Connector
Waterproof (Field Installable)	No Glue Required For IP68	IP68 With Potting Materials (3 Times)
Waterproof (Receptacle)	Unmated IP68	Mated IP68
Assembly Efficiency	6 Components	9 Components

