

iGrid Cable Assemblies >

iGrid Cable Assemblies deliver off-the-shelf (OTS) solutions with a broad offering of Molex connectors and a variety of cable lengths to facilitate both prototyping and global production.

FEATURES AND ADVANTAGES

UL 10002 Discrete Wires

Ready to use in electronic appliance applications and provides ease of design, prototyping and production

Meets 2011/65/ EU RoHS Compliance

Decreases engineering time and resources

Pin-to-Pin mapping from receptacle to PCB header

Provides ready-to-use, plug-and-play connections

Meets current cable assembly industry standards

Ensures high quality and meets current automotive industry standards

Custom assemblies for production also available

Meet design needs after prototyping is complete

MARKETS AND APPLICATIONS

Data/computing

Servers
Printers ATMs

Consumer

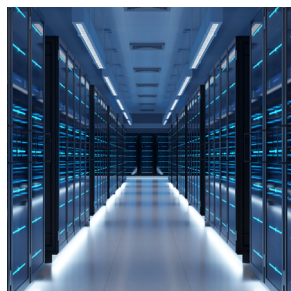
Home appliances
Gaming machines
Infotainment

Industrial

Power controllers
HVAC equipment

Automotive

Lighting
Safety systems



Data Center Servers



Home Appliances



Power Controllers

iGrid Cable Assemblies >

SPECIFICATIONS

REFERENCE INFORMATION

Packaging: Reel (503095), Tray (208659),

Bag (501646)

UL File No.: E29179

Mates with:

503091 with 501646 housing (Gold)

208659 with 501646 housing (Gold)

501645 with 501646 housing (Tin)

501876 with 501646 housing (Tin)

Use With:

501646 housing with 503095 terminals (Gold)

501646 housing with 501647 / 501648 terminals (Tin)

Designed In: Millimeters

RoHS: Yes

Halogen Free: No

Glow Wire Compliant: No

ELECTRICAL

Voltage (max.): 250V

Current (max.): 3.0A

Contact Resistance (max.): 20 milliohms

MECHANICAL

Durability: 30 Cycles

PHYSICAL

Housing: Polyamide

Contact: Copper Alloy (503095, 501647, 501648),

Brass (503091, 208659, 501645, 501876)

Plating Area: Gold Contact (503091, 208659)

Operating Temperature: -40 to +105°C

ORDERING INFORMATION

Series No	Component	Type	Circuits	Length (mm)
221955	iGrid R-R	Single	10 to 16	150, 300, 600
221956	iGrid R-S	Single	10 to 16	150, 300, 600

www.molex.com/link/otscableassemblies.html