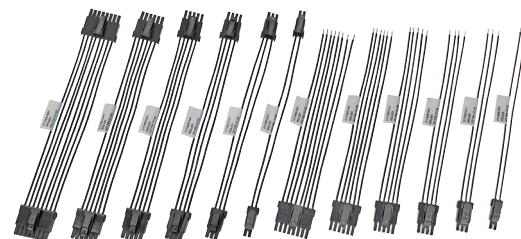


Off-the-Shelf Ultra-Fit Cable Assemblies >

Off-the-Shelf Ultra-Fit Cable Assemblies deliver an 11.0 to 14.0A current rating and offer a variety of cable lengths with the tangless feature that allows the terminal locking mechanism to be incorporated into the receptacle housing



Ultra-Fit Cable Assemblies

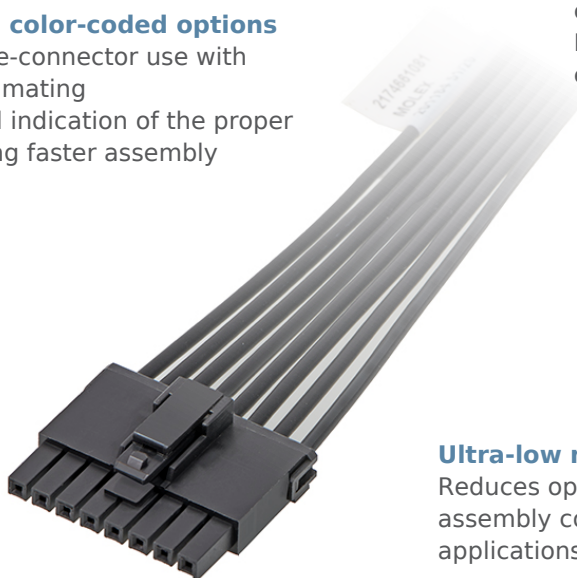
FEATURES AND ADVANTAGES

Multiple mechanically keyed color-coded options

- Allows same-circuit, multiple-connector use with virtually no chance of cross mating
- Color coding provides visual indication of the proper mating connector — enabling faster assembly

Optional TPA (terminal position assurance) retainer

- Guarantees the terminal is fully seated in the housing to reduce terminal back-out
- Retains terminal if main retention feature fails



Inertia-enhanced latch on tangless receptacles

Improves usage via audible click when mating
Reduces the chance of wire entanglement in the latch

17% smaller footprint over similar power connectors

Provides PCB space savings with optimized current density
Allows for smaller packaging without sacrificing current-carrying capabilities

Ultra-low mating force terminal

Reduces operator fatigue and improves assembly compliance for high-circuit applications

Positive-lock housing with anti-snag design

- Ensures mated connector assemblies will not accidentally disengage
- Provides an audible click while mating; Protects latch from damage due to wire snags

Internal locking mechanism on tangless receptacles

Ensure that tangless terminals are fully locked into place

Fully isolated terminals

Protects against potential damage of the header and receptacle terminals during handling and mating

Terminal interface with 6 independent points of contact (split-box terminal design)

Offers redundant, secondary current paths for long-term performance and reliability

Multi-color cable configurations with Ultra-Fit TPA Connectors available off the shelf

Has a design that supports development and production programs; multi-color cables ensure correct connection

Off-the-Shelf Ultra-Fit Cable Assemblies >

MARKETS AND APPLICATIONS

Automotive

Infotainment systems
Interior lighting uses, including consoles, vanity mirrors

Consumer

Refrigerators
Washing machines

Defense

C4ISR

Industrial

Assembly line equipment
Food and beverage equipment

Lighting

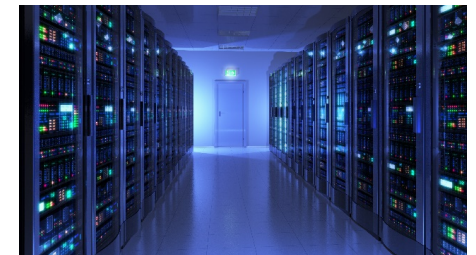
Ballasts
Home lighting fixtures

Medical

Healthcare IT devices
Patient monitors

Telecommunications/ Networking

Servers
Switches



SPECIFICATIONS*

Reference Information

Packaging: Bulk (connectors); reels (terminals)
UL File No.: E29179
CSA File No.: LR19980
Use With: 16 AWG
Insulation Diameter: 2.00mm
Designed In: Millimeters
RoHS: Yes
Halogen-Free: No
Glow Wire Compliant: Yes
IP Rating: N/A

*Information is based on Ultra-Fit connector specifications

Electrical

Voltage (max.): 300V AC/DC
Current (max.): 11.0A to 14.0A
(Depends upon number of circuits)
Contact Resistance (max.): 5 milliohms
Dielectric Withstanding Voltage: 1800 VAC
(unmate connectors for 1 minute between adjacent terminals and between terminals to ground)
Insulation Resistance (min.): 1000 Megohms

Mechanical

Terminal Insertion Force (max.): 14.7N
Terminal Retention to Housing (min.): 27N
Mating Force (max.): 4.5N per circuit
Unmating Force (min.): 4.0N per circuit
Durability (max.): 25 cycles

Physical

Housing: Nylon
Contact: High Copper Alloy
Plating: Tin over Nickel overall
Contact Area – Tin
Underplating – Tin
Operating Temperature: -10 to +80°C

ORDERING INFORMATION

Series	Component	Circuits	Lengths (mm)
217465	Off-the-Shelf Ultra-Fit Cable Assemblies	2, 3, 4, 6, and 8	150.00, 300.00 and 600.00
217466			
Custom product	Description		
Contact Molex	Off-the-Shelf Ultra-Fit Custom Cable Assemblies		

www.molex.com/link/otscableassemblies.html