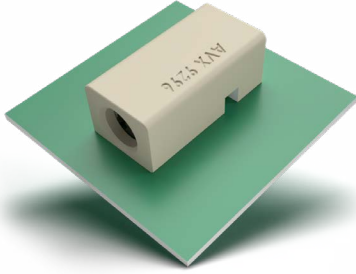


# Horizontal Poke-Home 18-24AWG Connector 4mm Pitch

## 9296-400



### GENERAL DESCRIPTION

KYOCERA AVX Interconnect continues to develop unique connectors to support market needs. Many product designs must accommodate small numbers of discrete wires connecting components to PCBs; the new 9296-400 series meets this challenge by providing quick and reliable wire-to-board terminations. Its compact SMT package: 4mm pitch, 3mm height, 1 to 6 positions; makes it ideal for a broad range of industrial and commercial applications. Wires are easily terminated with a simple strip and insertion step. This cost-effective connector enables easy assembly in factory settings or field termination by electrical installers for non-UL applications.

Developed for various industrial applications, the connector integrates the already proven 2.5mm dual beam poke-home contact into a connector housing. Dual spring Phosphor Bronze contact accepts a wide range (18-24AWG solid or stranded) of wire to accommodate any wire combination within a single connector. Optional version with pass-through holes and no wire stop contacts allow mating with KYOCERA AVX jumper pins. Optional visibility windows allow visual verification of full wire insertion.

### APPLICATIONS

- Machine Controls: motors, drives, solenoids, sensors, fans and pumps
- Commercial Buildings: controls, security, fire and sensors
- Smart Grid: meters, breakers and panels
- SSL/LED: bulbs, fixtures, signage and streetlights

### ELECTRICAL

- Current Rating: See matrix below
- Voltage Rating: 600 VAC(RMS) or VDC

### ENVIRONMENTAL

- Operating Temperature: -40°C to +130°C

### MECHANICAL

- Insulator Material: Glass-Filled Nylon 46; halogen free; UL94V-0 rated
- Contact Material: Phosphor Bronze
- Plating: Tin over Nickel
- Durability: 3 Cycles

### FEATURES AND BENEFITS

- Simple strip and poke-home wire insertion with easy twist and pull wire extraction
- 3mm height achieves the lowest height possible for this AWG range
- Accepts 18-24 AWG solid and stranded wires or jumper pins
- Dual spring beam box contact provides maximum mechanical stability and wire retention
- Optional visibility windows allow visual verification of full wire insertion.
- UL approved

### CURRENT RATING

	18AWG	20AWG	22AWG	24AWG	Jumper
UL	11A	10A	9A	8A	6A
cUL	8A	7A	6A	5A	4.5A

Certification: UL File #E90723

### HOW TO ORDER

