



TE Connectivity MULTIGIG RT

Ryan Hill, Product Manager
Feb 2022



EVERY CONNECTION COUNTS



MULTIGIG RT Solder Tail - VITA 46.31

EVERY CONNECTION COUNTS



NEW PRODUCT INTRODUCTION – Key Features/Benefits

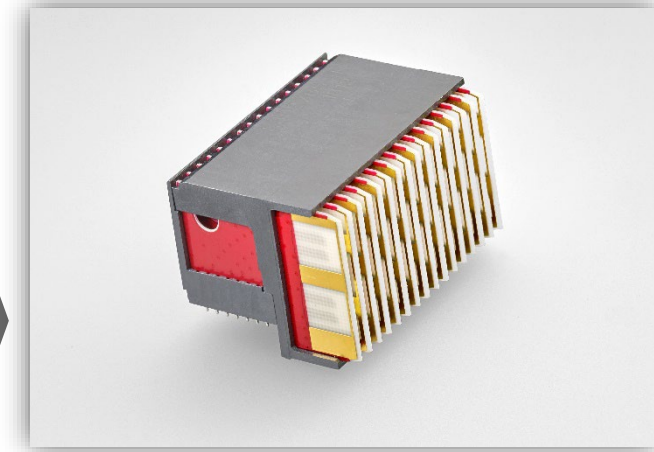


MULTIGIG RT Solder Tail – VITA 46.31

New VITA dot spec for higher data rate connectors supports *solder tail termination*

Key Benefits:

- Solder tail contact system allowing surface mount on PCB
- Supports high data rate protocols to 32+ Gb/s

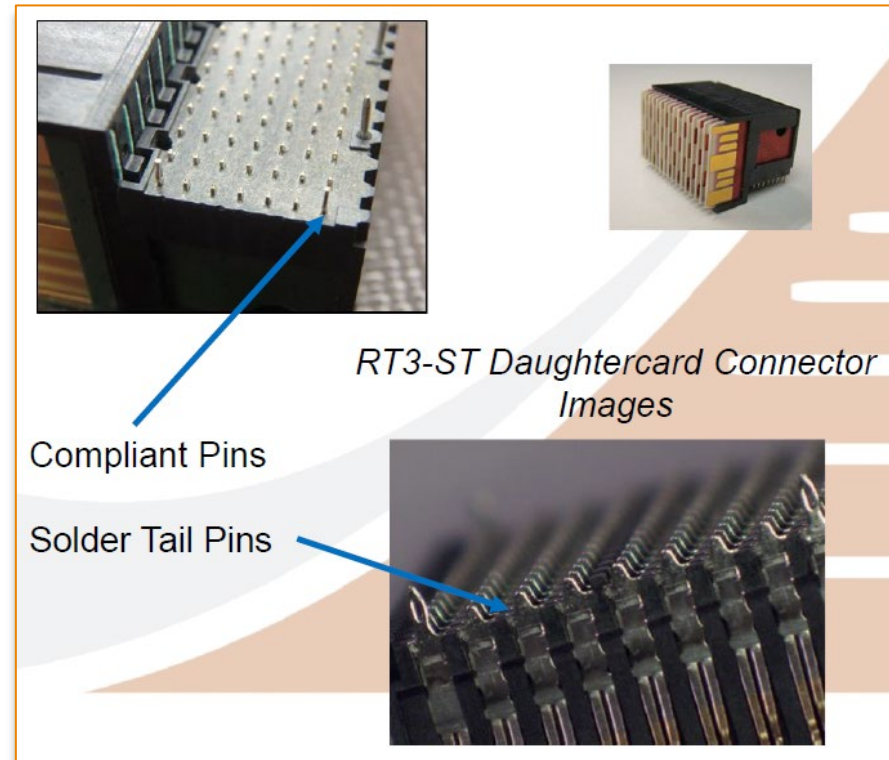


MULTIGIG RT Solder Tail – VITA 46.31

New dot spec for higher data rate connectors *with solder tail termination*

Additional Key Features:

- Solder tail contact system uses blind-vias on PCB's instead of traditional thru-holes for connector application
- Minimized footprint increases available pcb real estate for routing
- Intermateable with VITA 46 (backward compatible with legacy systems)
- Same proven rugged interface as MULTIGIG RT 2-R (per VITA 72 testing)



Select loaded Compliant pins on Ground locations secure connector to PCB during Reflow Soldering.

MULTIGIG RT Solder Tail – VITA 46.31

Applications/Markets

Markets

- Military Electronics / C4ISR
- Ground Defense
- Military Marine
- Missile Defense
- Satellites
- Launchers

Applications

- Embedded computing



VITA 46.31 Part Numbers

Part Number	Part Description	Backplane/Plug-In Card	Location	Position
2407864-1	RA Assy, ½ Left, MGRT3, Solder tail (93/7)	Plug-in card Connector	P0	½ left end
2407865-1	RA Assy, Center, MGRT3, Solder tail (93/7)	Plug-in card connector	P1, P2, P3, P4, P5, P6	Center (all differential Pair)
2407867-1	RA Plug Assy Ctr, MGRT3, Solder tail (93/7)	Plug-in card connector	P0 / P1A	Full connector with power wafer
2407868-1	Vert Assy, Left end, MGRT3, Solder tail (93/7)	Backplane connector	J0	½ left end module
2407869-1	Vert Assy, Center, MGRT3, Solder tail (93/7)	Backplane connector	J1, J3, J4, J5	Center
2407870-1	Vert Assy, Center, MGRT3, Solder tail (93/7)	Backplane connector	J0 / J1A	Full connector with power contacts
2407871-1	Vert Assy, Right end, MGRT3, Solder tail (93/7)	Backplane connector	J2, J6	Right end

MULTIGIG RT3-ST PCB Blind Via Details

Appendix B : Backplane Printed Circuit Board Fabrication Drawings

Rule B-1: The requirements and figures of [VITA 46.0] Appendix B **shall** be adhered to for compliant pin holes. [VM = T, A, I]

Additional content specific to this standard is noted.

The PCB hole dimensions in Figure B-1 apply for legacy VITA 46.0 PCB hole dimensions in backplanes.

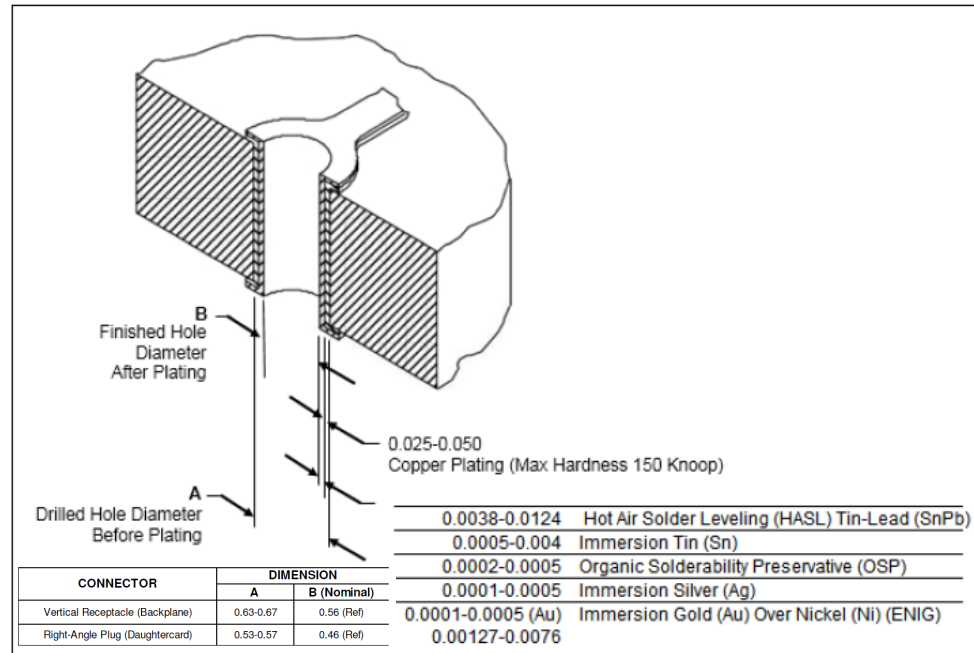
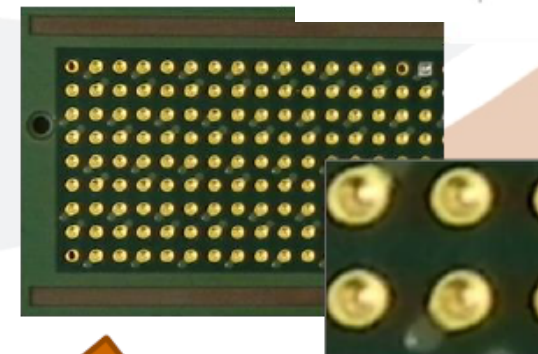
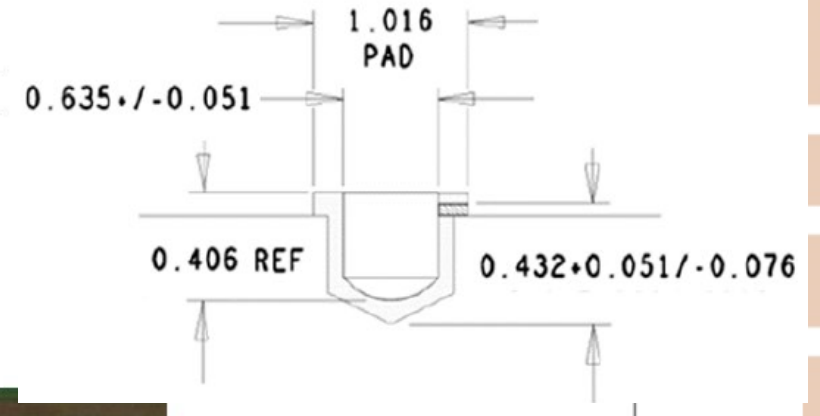


Figure B-1: Backplane PCB Hole Dimensions – Typically Used for VITA 46.0

- Reference backplane and daughtercard PCB Type A Blind Vias per VITA 46.31
- Standard VITA46.0 PCB hole specifications apply to compliant pin installations



MULTIGIG RT Solder Tail – VITA 46.31

Contact Info

Ryan Hill, Global Product Manager - (Americas/Asia Pacific)

Email: ryan.hill@te.com



Bert Broekhuis, Product Manager – (EMEA)

Email: B.Broekhuis@te.com



MULTIGIG RT, TE Connectivity, TE, TE connectivity (logo) are trademarks owned or licensed by TE Connectivity.

Other logos, product(s) and/or company names might be trademarks of their respective owners.